



CHL 50Hz/60Hz

Light Horizontal Multistage Centrifugal Pump

CHLK/CHLF(T)



Hangzhou Nanfang
Special Pump Industry Co.,Ltd.

Worldwide CNP Sales & Service Network

CNP Headquarter

Address: Renhe Town, Yuhang District, Hangzhou, Zhejiang

Tel: +86 571 86397810, 86397838

Fax: +86 571 86397809

PostCode: 311107

E-mail: info@nanfang-pump.com

Website: www.cnppump.com

E091204

The technical data are subject to amend without notice.



Company Profile



Hangzhou Nanfang Special Pump Industry Co.,Ltd. is specialized in manufacture of stainless steel multistage pumps, integrating scientific research, production and marketing. Since its establishment nearly 20 years ago, the company has devoted considerable efforts to innovation and management. The company has successfully developed various kinds of pumps which are applicable to industrial and mining enterprises, municipal water supply, farm irrigation, petrochemical engineering, domestic water and fire fighting water supply of high buildings, industrial water treatment, water purification, pharmaceutical industry, boiler, air-conditioning system etc. The main performances of CDL series stainless steel multistage vertical pump, TD in-line circulation pump, SJ series stainless steel multistage deep-well submersible pump, CDLK, CDLKF immersion type multi-stage centrifugal pump, CHL/CHLK/CHLF series stainless steel multistage horizontal pumps and QY series stainless steel pump conveying mixed gas and liquid, ZS series stainless steel horizontal single-stage centrifugal pump, MS series light stainless steel horizontal single-stage centrifugal pump, have fully reached international advanced level.

Besides designing pumps with advanced tools such as three-dimensional CAD and CFD software, the company boasts a complete set of precision manufacturing and inspection equipment. With perfect quality control system, the company has passed ISO9001 Quality System Certification, ISO14001 Environment Management System Certificate, and obtained CE Mark also. The company sell products well not only at home, but also in foreign countries, Europe, America, Southeastern Asia etc, gaining popularity due to their excellent quality, good credit standing and considerate after-sales service.

The company has established a wide sales and service network which has representative offices and service centers. Offices and service centers are set in all large and medium-scale cities, aiming to providing timely and satisfactory service for customers.

Satisfying customers will be eternal pursuit of the company. Looking forward to the future, the company will further keep up its fine tradition and persist in its business principle of "quality first, credit first and clients first" to offer customers products of high quality and more considerate services.

Nanfang pump, an international brand worthy of your trust!

Content

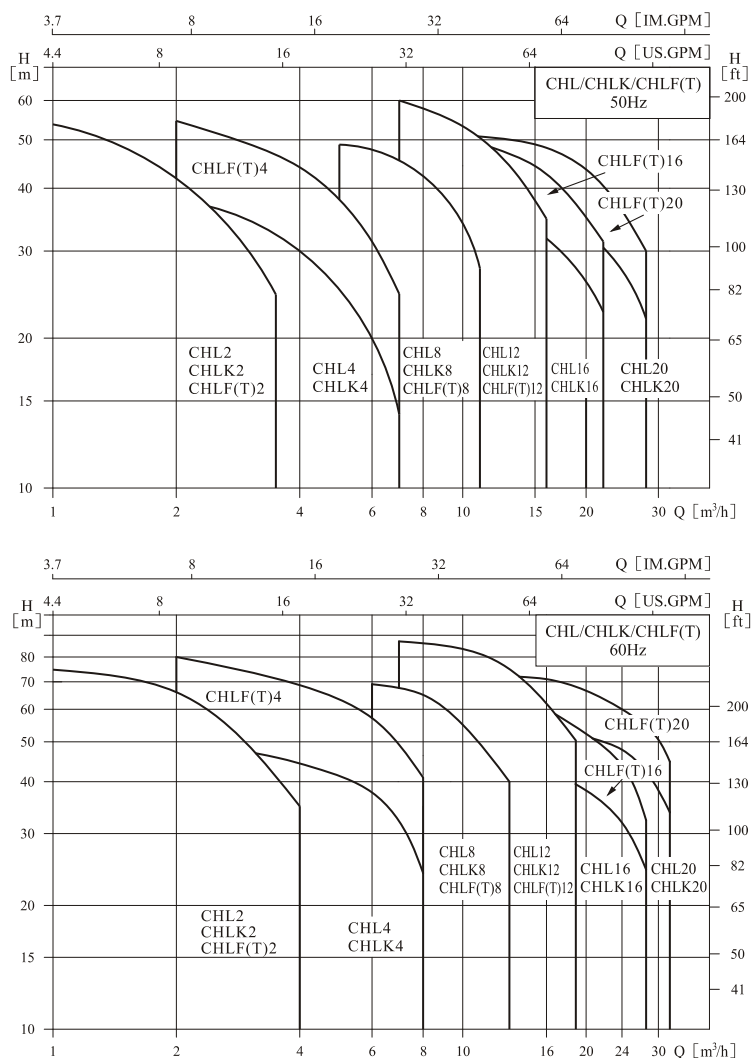
General Data

| | |
|---------------------|---|
| Performance scope | 3 |
| Application | 4 |
| Applicable medium | 4 |
| Pump | 4 |
| Curve conditions | 4 |
| Motor | 4 |
| Operation condition | 4 |
| Definition of Model | 5 |
| Material | 5 |
| Section drawing | 6 |

Technical Data

| | |
|---------------------|----|
| CHL/CHLK2,50Hz | 7 |
| CHL/CHLK4,50Hz | 9 |
| CHL/CHLK8,50Hz | 11 |
| CHL/CHLK12,50Hz | 13 |
| CHL/CHLK16,50Hz | 15 |
| CHL/CHLK20,50Hz | 17 |
| CHLF/CHLF(T)2,50Hz | 19 |
| CHLF/CHLF(T)4,50Hz | 21 |
| CHLF/CHLF(T)8,50Hz | 23 |
| CHLF/CHLF(T)12,50Hz | 25 |
| CHLF/CHLF(T)16,50Hz | 27 |
| CHLF/CHLF(T)20,50Hz | 29 |
| CHL/CHLK2,60Hz | 31 |
| CHL/CHLK4,60Hz | 33 |
| CHL/CHLK8,60Hz | 35 |
| CHL/CHLK12,60Hz | 37 |
| CHL/CHLK16,60Hz | 39 |
| CHL/CHLK20,60Hz | 41 |
| CHLF/CHLF(T)2,60Hz | 43 |
| CHLF/CHLF(T)4,60Hz | 45 |
| CHLF/CHLF(T)8,60Hz | 47 |
| CHLF/CHLF(T)12,60Hz | 49 |
| CHLF/CHLF(T)16,60Hz | 51 |
| CHLF/CHLF(T)20,60Hz | 53 |

● Performance scope



● Application

CHL,CHLK and CHLF(T) type pump are mainly used in industrial field:

- Air-conditioning system
- Cooling system
- Industrial cleaning
- Water treatment (Water purification)
- Aquiculture
- Fertilizing / metering system
- Environmental application
- Other special applications

● Applicable medium

- Thin and clean non-flammable and non-explosive liquid without solid granules and fibers.
- Mineral water, soft water, pure water, edible vegetable oil and other light chemical mediums.
- When the density or viscosity of to-be-conveyed liquid is larger than that of water, it is necessary to select a driving motor of high-power.
- Whether a specific liquid is suitable for the pump depends on many factors, among which the most important ones are chlorine content, PH value, temperature, solvent and oil content.

● Pump

- Horizontal multistage non-self-priming centrifugal pump, attached with long shaft electric motor.
- Compact structure renders small size of pump; axial inlet and radial outlet.

● Curve conditions

Following conditions are suitable for the performance curves shown above.

- All curves are based on the measured values of 50Hz: constant motor speed 2900r/min, 60 Hz: constant motor speed 3500 r/min;
- Curve tolerance in conformity with ISO9906 Annex A.
- Measurement is done with 20°C air-free water, kinematic viscosity of 1mm²/sec.
- The operation of pump shall refer to the performance region described by the thickened curve to prevent overheating due to too small flow rate or overload of motor due to too large flow rate.

● Motor

- TEFC motor 2-pole
- Protection class:IP55
- Insulation class:F
- Standard voltage, 50Hz: 1 × 220-240V
3 × 220-240V/380-415V
- Standard voltage, 60Hz: 1 × 220-240V
3 × 220-240V/380-415V
- Single phase motor (max) : 2.4kW

● Operation condition

- Liquid temperature: Normal temperature type: -15°C~+70°C
Hot water type: -15°C~+110°C
- Ambient temperature: up to +40°C
- Max.operation pressure:10 bar
- Max.inlet pressure is limited by max. Operation pressure

| Connection port | CHL/CHLK/CHLF(T)2 | CHL/CHLK/CHLF(T)4 | CHL/CHLK8, 12,16,20 | CHLF(T)8 | CHLF(T)12 | CHLF(T)16,20 |
|-----------------|-------------------|-------------------|---------------------|------------------|------------------|--------------|
| Inlet | G1 | G1 $\frac{1}{4}$ | G2 | G1 $\frac{1}{2}$ | G1 $\frac{1}{2}$ | G2 |
| Outlet | G1 | G1 | G2 | G1 $\frac{1}{4}$ | G1 $\frac{1}{2}$ | G2 |

● Definition of Model

CHL Example

CHL 4 - 30
 Stage × 10
 Rated flow m³/h

Light horizontal multistage centrifugal pump
 (Flow passage components stainless steel 304 or 316)

CHLK Example

CHL K 4 - 30
 Stage × 10
 Rated flow m³/h
 Stainless steel air-conditioning pump

Light horizontal multistage centrifugal pump
 (Flow passage components stainless steel 304 or 316)

CHLF(T) Example

CHLF(T) 4 - 30
 Stage × 10
 Rated flow m³/h

Light horizontal multistage centrifugal pump
 (F stands for "section type", T means "Suction and discharge are made of cast iron"; stainless steel, omitted)

● Material CHL/CHLK

| No. | Name | Material | AISI / ASTM |
|-----|--------------------------|-----------------|-------------|
| 1 | Inlet and outlet chamber | Stainless steel | AISI304 |
| 2 | Connection pipe | Stainless steel | AISI304 |
| 3 | Clamp plate | Stainless steel | AISI304 |
| 4 | Impeller | Stainless steel | AISI304 |
| 5 | Shaft | Stainless steel | AISI304 |
| 6 | Plug | Stainless steel | AISI304 |
| 7 | Discharge diffuser | Stainless steel | AISI304 |
| 8 | Mechanical seal | | |
| 9 | Motor end cover | Aluminum alloy | |
| 10 | Base plate | Cast iron | ASTM25B |
| 11 | Spannband | Stainless steel | AISI304 |
| 12 | Diffuser | Stainless steel | AISI304 |
| 13 | Support diffuser | Stainless steel | AISI304 |
| 14 | Inducer | Stainless steel | AISI304 |

● Material CHLF/CHLF(T)

| No. | Name | Material | AISI / ASTM |
|-----|------------------|------------------|-------------|
| 2 | Plug | Stainless steel | AISI304 |
| 3 | Bearing | Tungsten carbide | |
| 4 | Impeller | Stainless steel | AISI304 |
| 5 | Shaft | Stainless steel | AISI304 |
| 8 | Mechanical seal | | |
| 9 | Motor end cover | Aluminum alloy | |
| 10 | Base plate | Cast iron | ASTM25B |
| 11 | Staybolt | Stainless steel | AISI304 |
| 12 | Diffuser | Stainless steel | AISI304 |
| 13 | Support diffuser | Stainless steel | AISI304 |
| 14 | Impeller sleeve | Stainless steel | AISI304 |

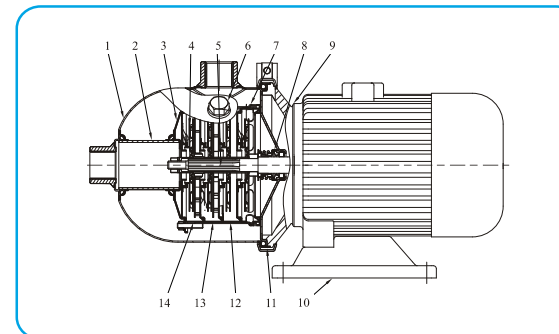
CHLF

| | | | |
|---|-----------|-----------------|---------|
| 1 | Suction | Stainless steel | AISI304 |
| 7 | Discharge | Stainless steel | AISI304 |

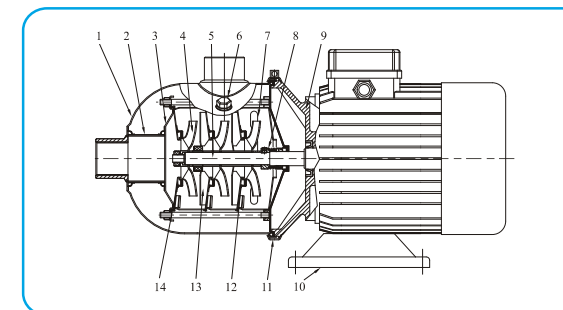
CHLF(T)

| | | | |
|---|-----------|-----------|---------|
| 1 | Suction | Cast iron | ASTM25B |
| 7 | Discharge | Cast iron | ASTM25B |

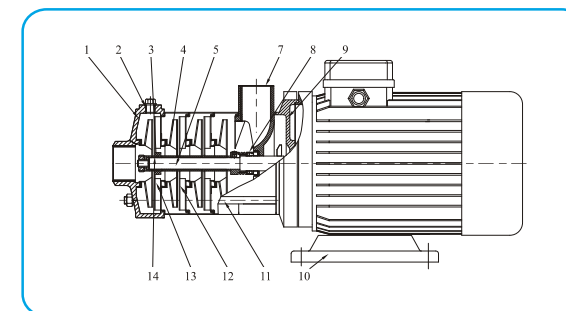
● Section drawing CHL,CHLK2,4



● Section drawing CHL,CHLK8,12,16,20

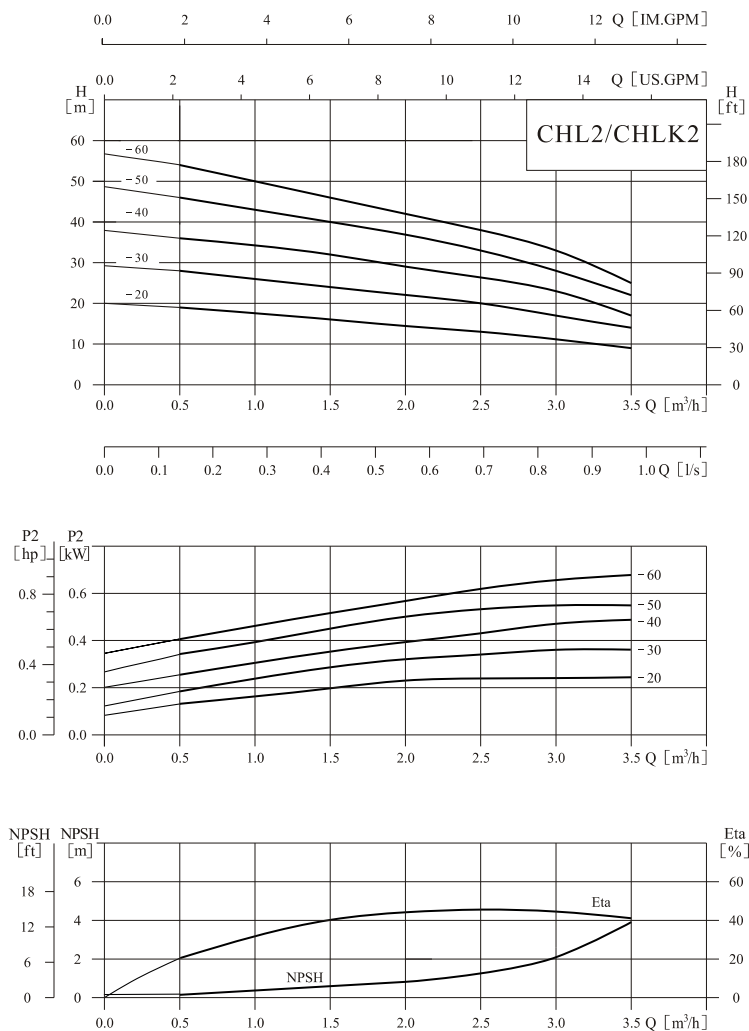


● Section drawing CHLF,CHLF(T)



● Performance curve

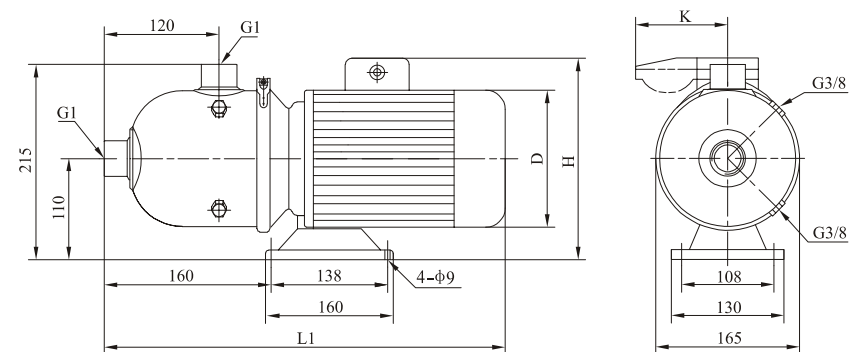
ISO9906 Annex A



● Performance table

| Model | Driving motor | | Q (m³/h) | 0.5 | 1.0 | 1.5 | 2.0 | 2.5 | 3.0 | 3.5 |
|---------|---------------|------|----------|-----|-----|-----|-----|-----|-----|-----|
| | (kW) | (hp) | | | | | | | | |
| CHL2-20 | 0.37 | 0.5 | H (m) | 19 | 18 | 16 | 14 | 13 | 11 | 9 |
| CHL2-30 | 0.55 | 0.75 | | 28 | 27 | 24 | 21 | 20 | 17 | 14 |
| CHL2-40 | 0.55 | 0.75 | | 36 | 34 | 32 | 28 | 26 | 23 | 17 |
| CHL2-50 | 0.55 | 0.75 | | 46 | 43 | 40 | 35 | 33 | 28 | 22 |
| CHL2-60 | 0.75 | 1 | | 54 | 50 | 48 | 42 | 38 | 33 | 25 |

● Installation sketch

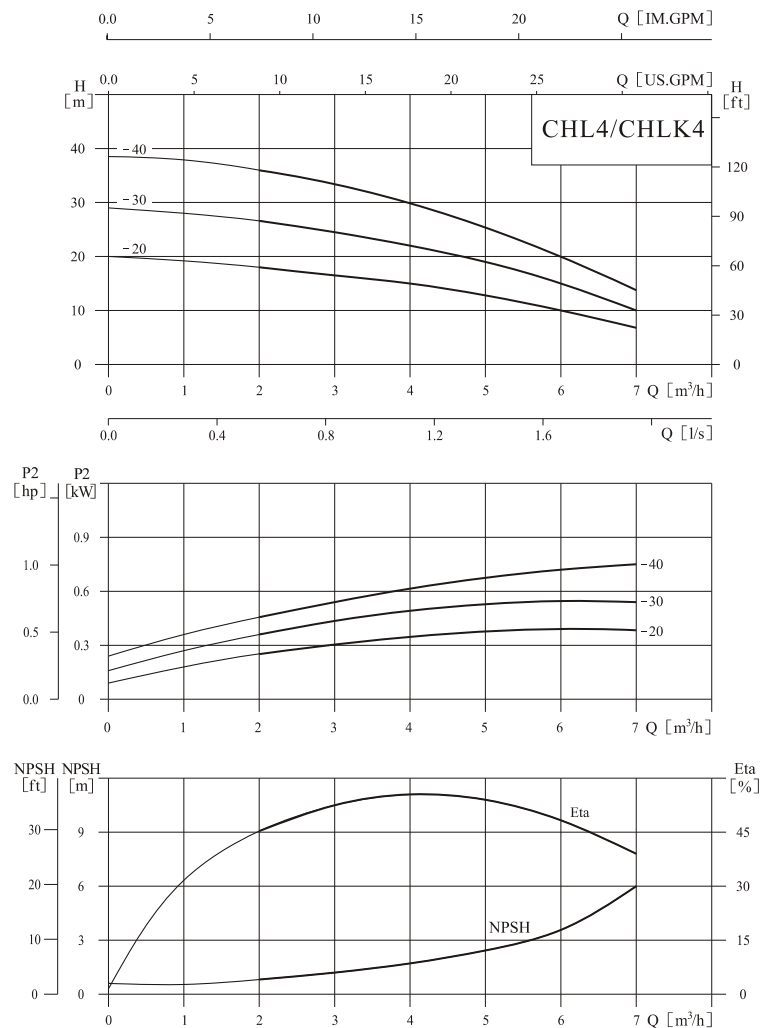


● Size and weight

| Motor | Model | Size (mm) | | | | Weight (kg) |
|------------------------------|---------|-----------|-----|---------|------|-------------|
| | | L1 | D | H | K | |
| Three-phase/ single-phase | CHL2-20 | 400 | 145 | 215/230 | /96 | 13 |
| | CHL2-30 | 400 | 145 | 215/230 | /96 | 13 |
| | CHL2-40 | 400 | 145 | 215/230 | /96 | 13 |
| | CHL2-50 | 400 | 145 | 215/230 | /96 | 13 |
| | CHL2-60 | 445 | 170 | 225/245 | /100 | 15 |

Performance curve

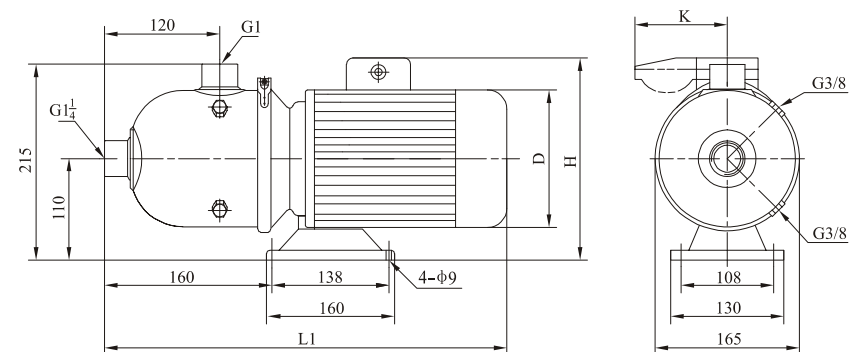
ISO9906 Annex A



Performance table

| Model | Driving motor | | Q (m³/h) | 1 | 2 | 3 | 4 | 5 | 6 | 7 |
|---------|---------------|------|----------|----|----|----|----|----|----|----|
| | (kW) | (hp) | | | | | | | | |
| CHL4-20 | 0.55 | 0.75 | H (m) | 19 | 18 | 16 | 15 | 13 | 10 | 7 |
| CHL4-30 | 0.75 | 1 | | 28 | 27 | 24 | 22 | 19 | 15 | 10 |
| CHL4-40 | 0.75 | 1 | | 38 | 36 | 32 | 30 | 26 | 20 | 14 |

Installation sketch

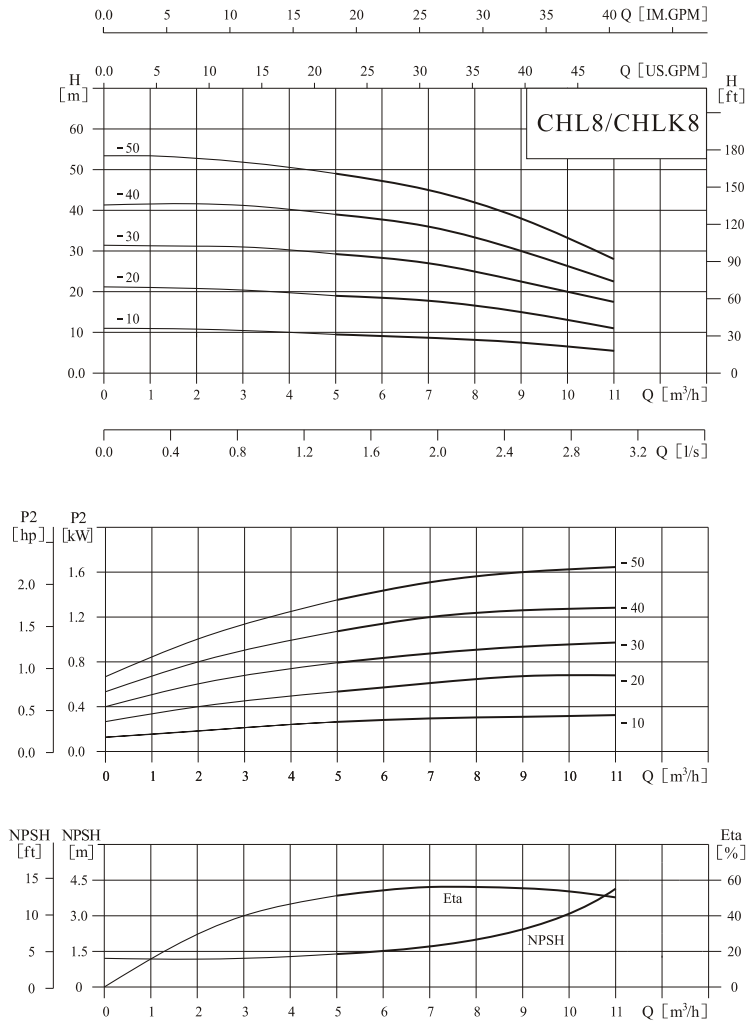


Size and weight

| Motor | Model | Size (mm) | | | | Weight (kg) |
|------------------------------|---------|-----------|-----|---------|------|-------------|
| | | L1 | D | H | K | |
| Three-phase/ single-phase | CHL4-20 | 400 | 145 | 215/230 | /96 | 12 |
| | CHL4-30 | 445 | 170 | 225/245 | /100 | 15 |
| | CHL4-40 | 445 | 170 | 225/245 | /100 | 15 |

● Performance curve

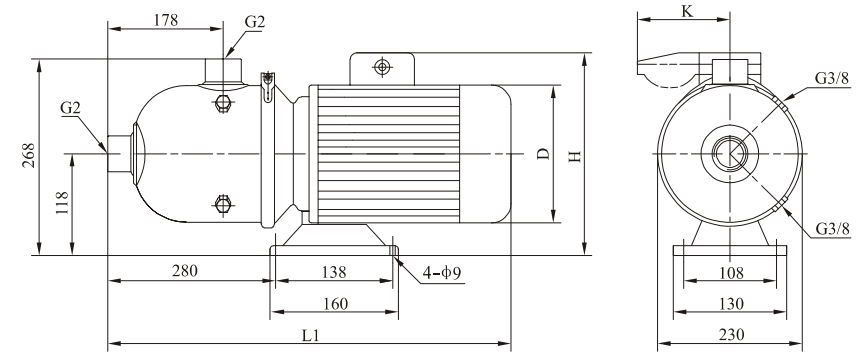
ISO9906 Annex A



● Performance table

| Model | Driving motor | | Q (m³/h) | 5 | 6 | 7 | 8 | 9 | 10 | 11 |
|---------|---------------|------|-------------|-----|------|----|------|------|------|------|
| | (kW) | (hp) | | | | | | | | |
| CHL8-10 | 0.75 | 1 | H (m) | 9.5 | 9.3 | 9 | 8.5 | 7.5 | 6.5 | 5.5 |
| CHL8-20 | 0.75 | 1 | | 19 | 18.5 | 18 | 17 | 15 | 13 | 11 |
| CHL8-30 | 1.1 | 1.5 | | 29 | 28 | 27 | 25.5 | 22.5 | 20 | 17.5 |
| CHL8-40 | 1.5 | 2 | | 39 | 38 | 36 | 34 | 30 | 26.5 | 22.5 |
| CHL8-50 | 2.2 | 3 | | 49 | 47 | 45 | 42.5 | 38 | 33.5 | 28 |

● Installation sketch

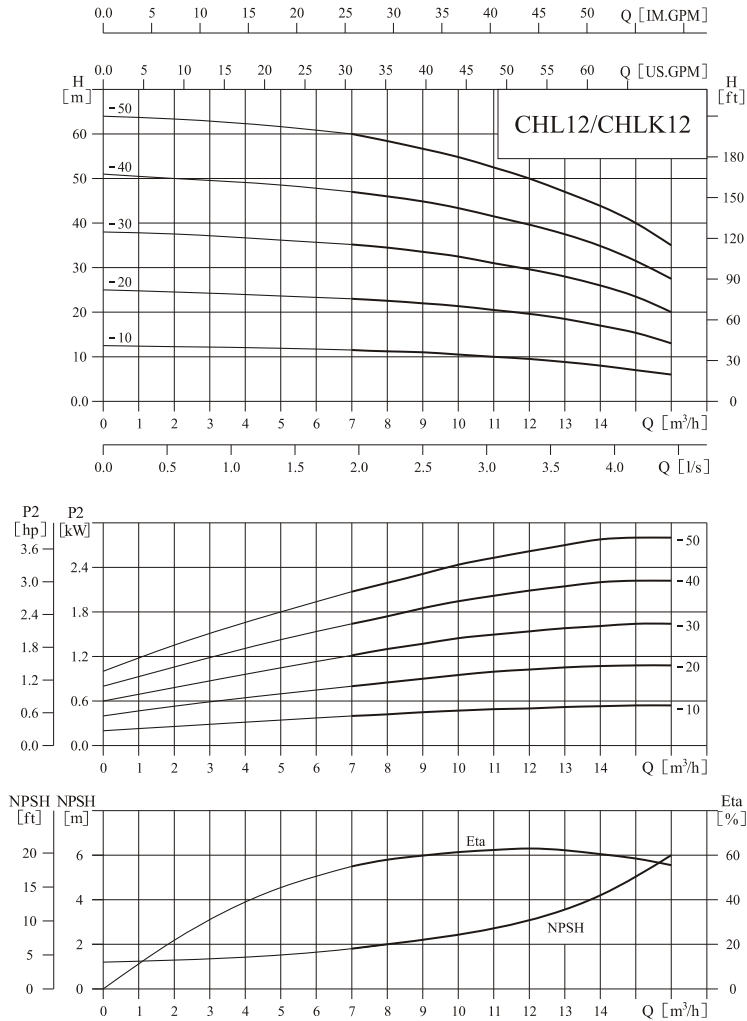


● Size and weight

| Motor | Model | Size (mm) | | | | Weight (kg) |
|------------------------------|---------|-----------|-----|---------|------|-------------|
| | | L1 | D | H | K | |
| Three-phase/ single-phase | CHL8-10 | 560 | 170 | 230/265 | /100 | 20 |
| | CHL8-20 | 560 | 170 | 230/265 | /100 | 20 |
| | CHL8-30 | 560 | 170 | 230/265 | /100 | 25 |
| | CHL8-40 | 580 | 180 | 240/270 | /100 | 25 |
| | CHL8-50 | 580 | 180 | 240/270 | /100 | 30 |

● Performance curve

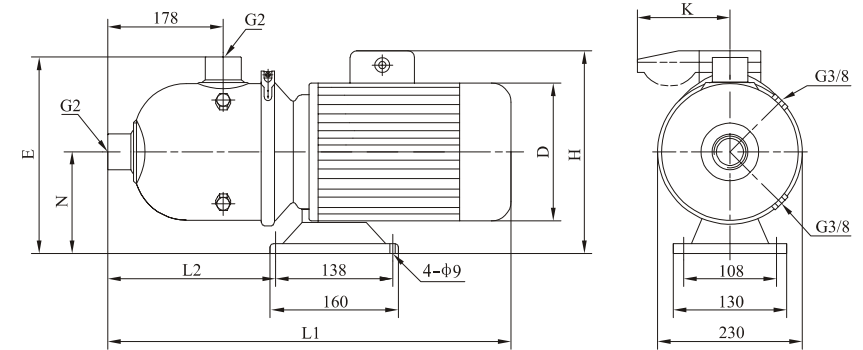
ISO9906 Annex A



● Performance table

| Model | Driving motor | | Q (m³/h) | 7 | 8 | 9 | 10 | 11 | 12 | 13 | 14 | 15 | 16 |
|----------|---------------|------|----------|------|------|------|------|------|------|------|----|------|------|
| | (kW) | (hp) | | | | | | | | | | | |
| CHL12-10 | 0.75 | 1 | H (m) | 11.5 | 11.2 | 11 | 10.5 | 10 | 9.5 | 9 | 8 | 7 | 6 |
| CHL12-20 | 1.2 | 1.6 | | 23 | 22.5 | 22 | 21.5 | 20.5 | 19.5 | 18.5 | 17 | 15.5 | 13 |
| CHL12-30 | 1.8 | 2.4 | | 35 | 34.5 | 33.5 | 32.5 | 31 | 29.5 | 28 | 26 | 23.5 | 20 |
| CHL12-40 | 2.4 | 3.3 | | 47 | 46 | 45 | 43.5 | 41.5 | 39.5 | 37.5 | 35 | 31.5 | 27.5 |
| CHL12-50 | 3 | 4 | | 60 | 58 | 56.5 | 55 | 52.5 | 50 | 47 | 44 | 40 | 35 |

● Installation sketch

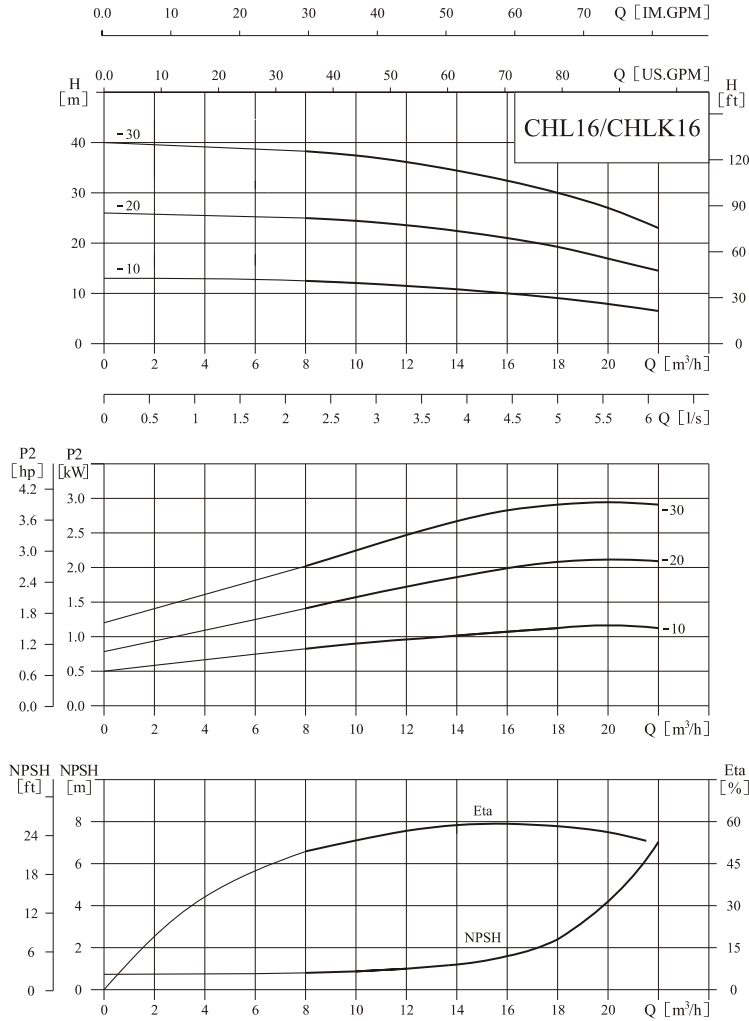


● Size and weight

| Motor | Model | Size (mm) | | | | | | | Weight (kg) |
|------------------------------|----------|-----------|-----|---------|-----|-----|-----|------|-------------|
| | | L1 | L2 | H | D | E | N | K | |
| Three-phase/ single-phase | CHL12-10 | 560 | 280 | 230/265 | 170 | 268 | 118 | /100 | 20 |
| | CHL12-20 | 560 | 280 | 230/265 | 170 | 268 | 118 | /100 | 21 |
| | CHL12-30 | 580 | 280 | 240/270 | 180 | 268 | 118 | /100 | 25 |
| | CHL12-40 | 580 | 280 | 240/270 | 180 | 268 | 118 | /100 | 29 |
| | CHL12-50 | 610 | 270 | 270/ | 195 | 276 | 126 | | 34 |

● Performance curve

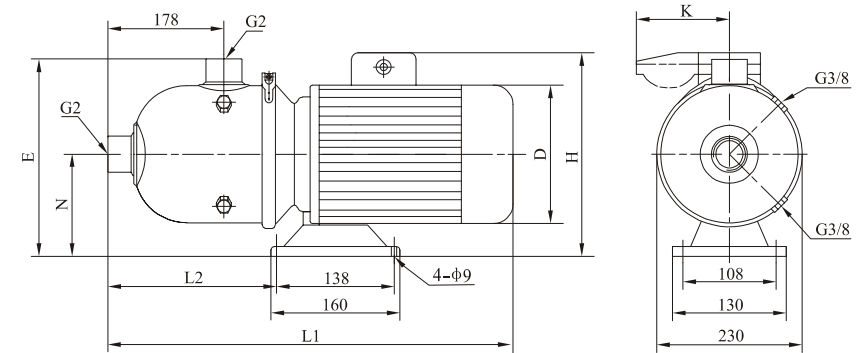
ISO9906 Annex A



● Performance table

| Model | Driving motor | | Q (m³/h) | 8 | 10 | 12 | 14 | 16 | 18 | 20 | 22 |
|----------|---------------|------|-------------|------|----|------|------|----|----|-----|------|
| | (kW) | (hp) | | | | | | | | | |
| CHL16-10 | 1.1 | 1.5 | H (m) | 12.5 | 12 | 11.5 | 10.5 | 10 | 9 | 7.5 | 6.5 |
| CHL16-20 | 2.2 | 3 | | 25.5 | 24 | 23 | 22 | 21 | 19 | 17 | 14.5 |
| CHL16-30 | 3 | 4 | | 38.5 | 37 | 36 | 34 | 32 | 30 | 27 | 23 |

● Installation sketch

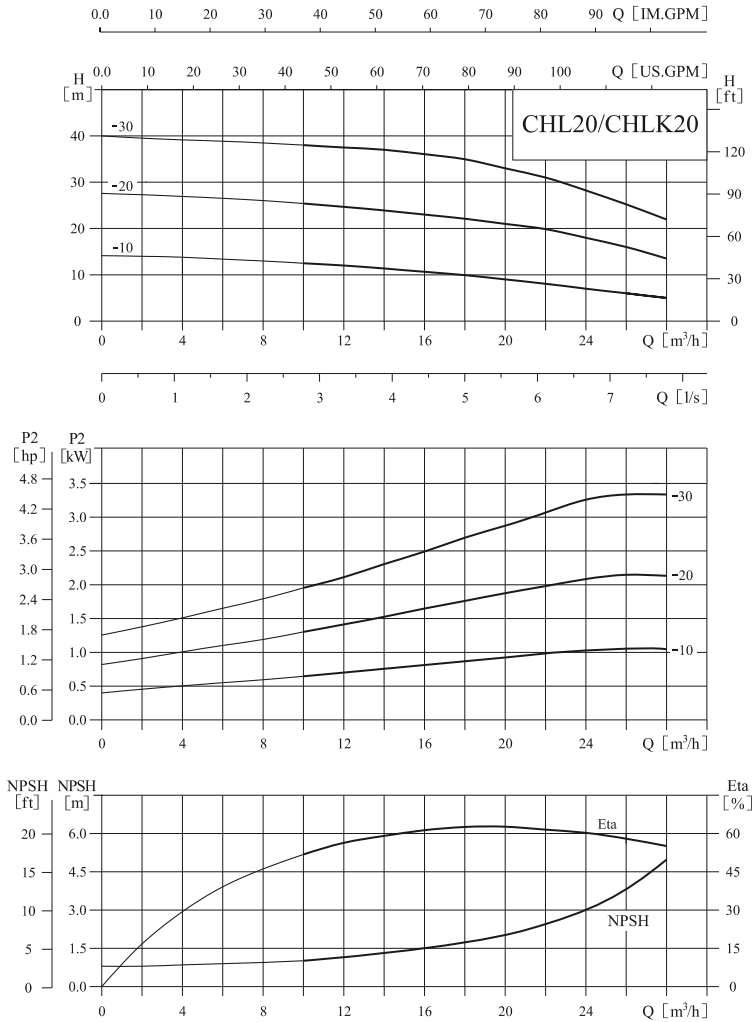


● Size and weight

| Motor | Model | Size (mm) | | | | | | | Weight (kg) |
|------------------------------|----------|-----------|-----|-----|-----|-----|---------|------|-------------|
| | | L1 | L2 | E | N | D | H | K | |
| Three-phase/ single-phase | CHL16-10 | 560 | 280 | 268 | 118 | 170 | 230/265 | /100 | 20 |
| | CHL16-20 | 580 | 280 | 268 | 118 | 180 | 240/270 | /100 | 27 |
| | CHL16-30 | 610 | 270 | 276 | 126 | 195 | 270/ | | 34 |

● Performance curve

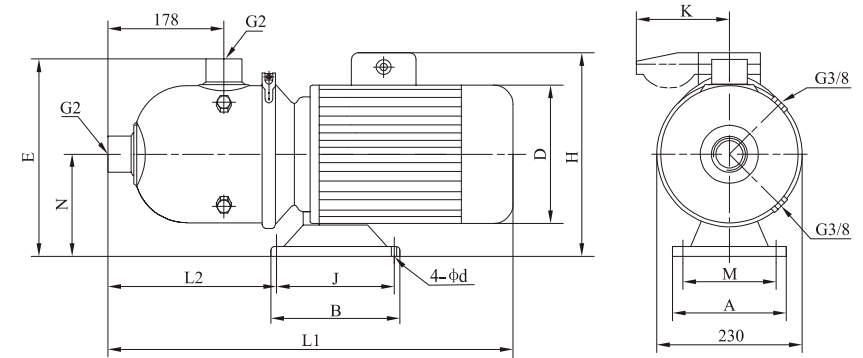
ISO9906 Annex A



● Performance table

| Model | Driving motor | | Q (m³/h) | 10 | 12 | 14 | 16 | 18 | 20 | 22 | 24 | 26 | 28 |
|----------|---------------|------|----------|------|------|------|----|------|-----|-----|-----|-----|------|
| | (kW) | (hp) | | | | | | | | | | | |
| CHL20-10 | 1.1 | 1.5 | H (m) | 12.5 | 12 | 11.5 | 11 | 10.5 | 9.5 | 8.5 | 7.5 | 6.5 | 5.5 |
| CHL20-20 | 2.2 | 3 | | 25.5 | 24.5 | 24 | 23 | 22 | 21 | 20 | 18 | 16 | 13.5 |
| CHL20-30 | 4 | 5.5 | | 38 | 37.5 | 37 | 36 | 35 | 33 | 31 | 28 | 25 | 22 |

● Installation sketch

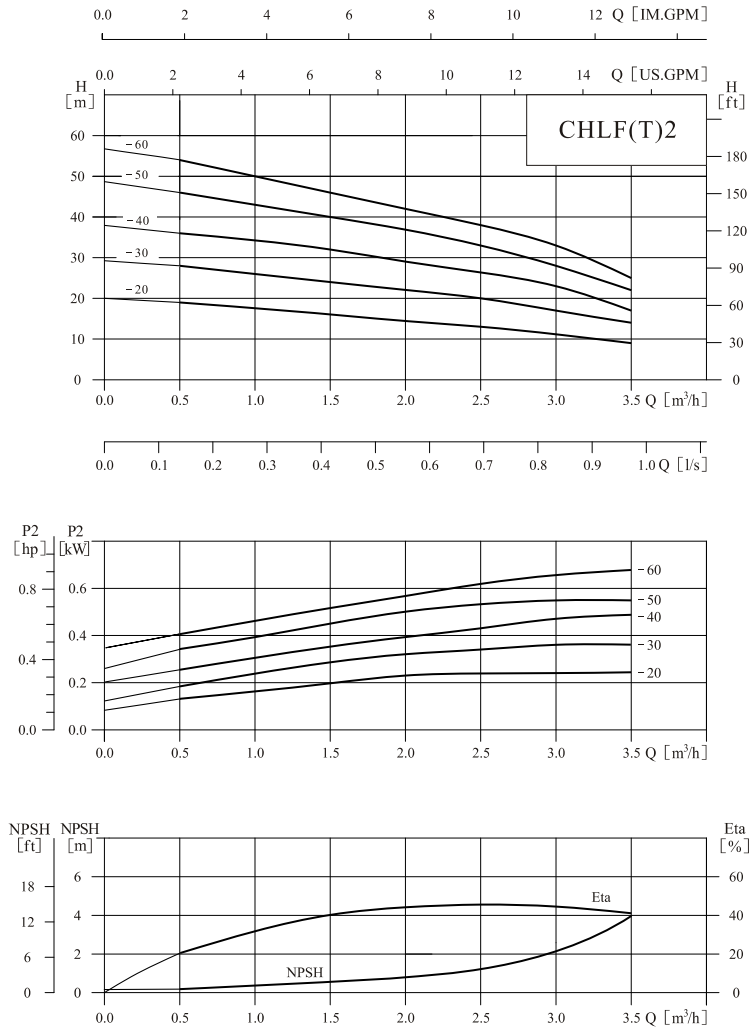


● Size and weight

| Motor | Model | Size (mm) | | | | | | | | | | | | Weight (kg) |
|------------------------------|----------|-----------|-----|---------|-----|-----|-----|-----|-----|-----|-----|----|------|-------------|
| | | L1 | L2 | H | D | E | N | A | M | B | J | d | K | |
| Three-phase/ single-phase | CHL20-10 | 560 | 280 | 230/265 | 170 | 268 | 118 | 130 | 108 | 160 | 138 | 9 | /100 | 21 |
| | CHL20-20 | 580 | 280 | 240/270 | 180 | 268 | 118 | 130 | 108 | 160 | 138 | 9 | /100 | 28 |
| | CHL20-30 | 650 | 360 | 270/ | 220 | 270 | 120 | 230 | 190 | 170 | 140 | 12 | | 42 |

● Performance curve

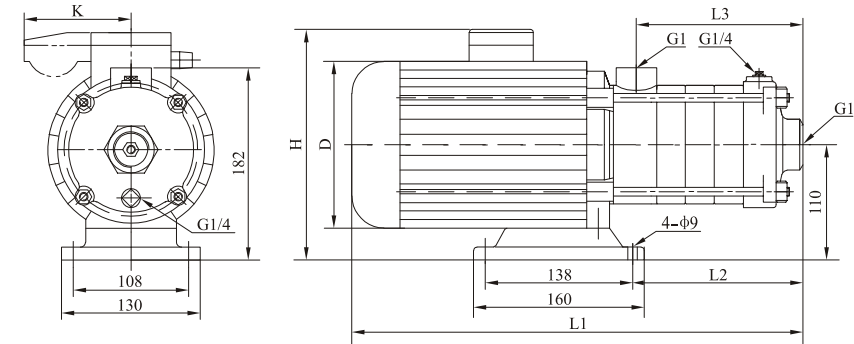
ISO9906 Annex A



● Performance table

| Model | Driving motor | | Q (m³/h) | 0.5 | 1.0 | 1.5 | 2.0 | 2.5 | 3.0 | 3.5 |
|-------------|---------------|------|-------------|-----|-----|-----|-----|-----|-----|-----|
| | (kW) | (hp) | | | | | | | | |
| CHLF(T)2-20 | 0.37 | 0.5 | H (m) | 19 | 18 | 16 | 14 | 13 | 11 | 9 |
| CHLF(T)2-30 | 0.55 | 0.75 | | 28 | 27 | 24 | 21 | 20 | 17 | 14 |
| CHLF(T)2-40 | 0.55 | 0.75 | | 36 | 34 | 32 | 28 | 26 | 23 | 17 |
| CHLF(T)2-50 | 0.55 | 0.75 | | 46 | 43 | 40 | 35 | 33 | 28 | 22 |
| CHLF(T)2-60 | 0.75 | 1 | | 54 | 50 | 48 | 42 | 38 | 33 | 25 |

● Installation sketch

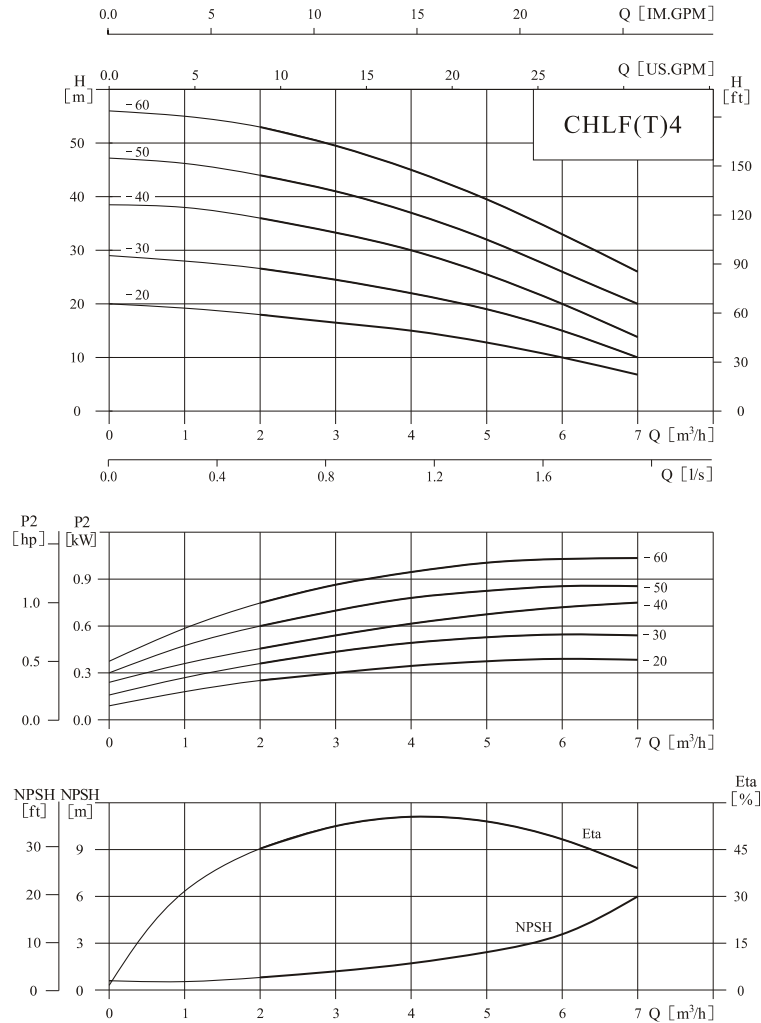


● Size and weight

| Motor | Model | Size (mm) | | | | | | Weight (kg) |
|------------------------------|-------------|-----------|-----|-----|-----|---------|------|-------------|
| | | L1 | L2 | L3 | D | H | K | |
| Three-phase/ single-phase | CHLF(T)2-20 | 305 | 87 | 84 | 145 | 215/230 | /96 | 15 |
| | CHLF(T)2-30 | 323 | 105 | 102 | 145 | 215/230 | /96 | 15 |
| | CHLF(T)2-40 | 341 | 123 | 120 | 145 | 215/230 | /96 | 15 |
| | CHLF(T)2-50 | 359 | 141 | 138 | 145 | 215/230 | /96 | 15 |
| | CHLF(T)2-60 | 422 | 159 | 156 | 170 | 225/245 | /100 | 17 |

● Performance curve

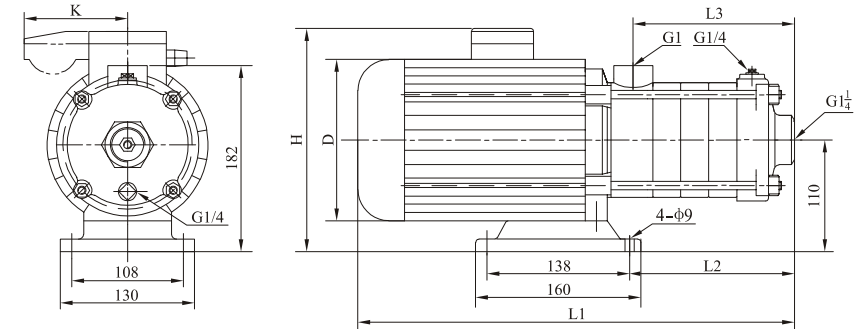
ISO9906 Annex A



● Performance table

| Model | Driving motor | | Q (m³/h) | 1 | 2 | 3 | 4 | 5 | 6 | 7 |
|-------------|---------------|------|----------|----|----|----|----|----|----|----|
| | (kW) | (hp) | | | | | | | | |
| CHLF(T)4-20 | 0.55 | 0.75 | H (m) | 19 | 18 | 16 | 15 | 13 | 10 | 7 |
| CHLF(T)4-30 | 0.55 | 0.75 | | 28 | 27 | 24 | 22 | 19 | 15 | 10 |
| CHLF(T)4-40 | 0.75 | 1 | | 38 | 36 | 32 | 30 | 26 | 20 | 14 |
| CHLF(T)4-50 | 1.1 | 1.5 | | 46 | 44 | 41 | 38 | 32 | 26 | 20 |
| CHLF(T)4-60 | 1.1 | 1.5 | | 55 | 53 | 50 | 45 | 37 | 31 | 26 |

● Installation sketch

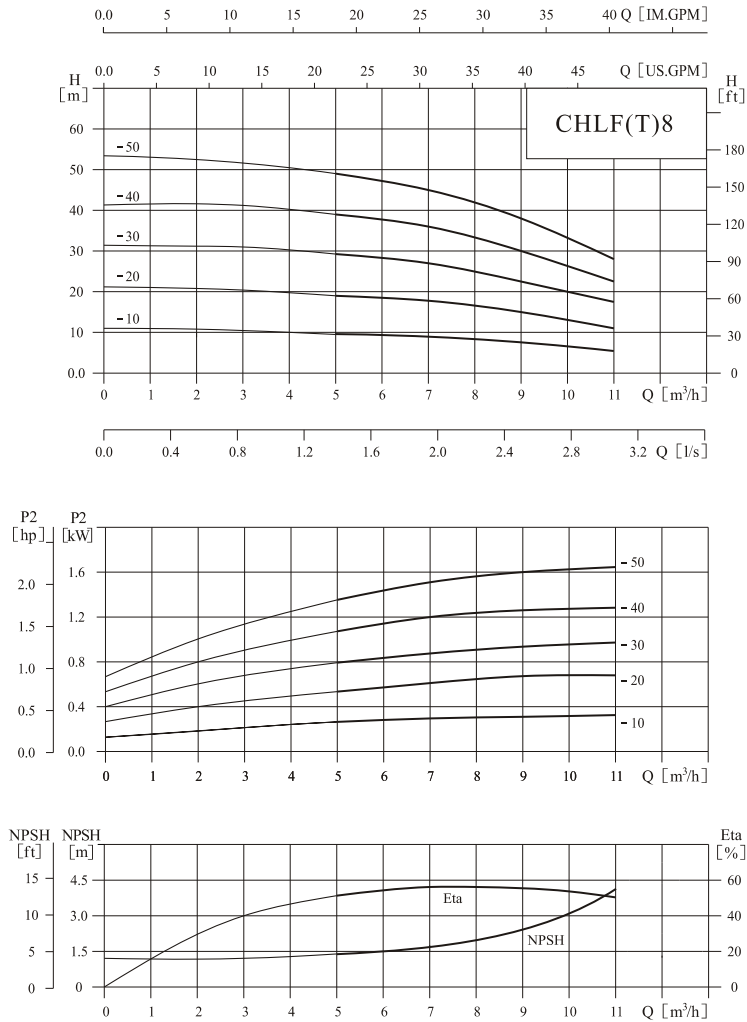


● Size and weight

| Motor | Model | Size (mm) | | | | | | Weight (kg) |
|------------------------------|-------------|-----------|-----|-----|-----|---------|------|-------------|
| | | L1 | L2 | L3 | D | H | K | |
| Three-phase/ single-phase | CHLF(T)4-20 | 329 | 105 | 102 | 145 | 215/230 | /96 | 15 |
| | CHLF(T)4-30 | 356 | 132 | 129 | 145 | 215/230 | /96 | 15 |
| | CHLF(T)4-40 | 416 | 162 | 156 | 170 | 225/245 | /100 | 17 |
| | CHLF(T)4-50 | 455 | 188 | 183 | 170 | 225/245 | /100 | 17 |
| | CHLF(T)4-60 | 482 | 213 | 210 | 170 | 225/245 | /100 | 17 |

● Performance curve

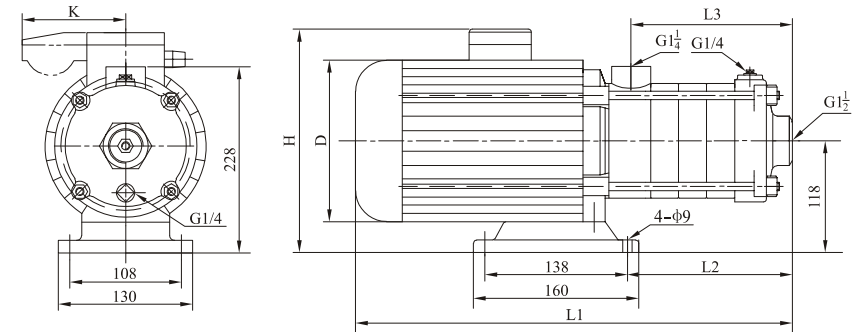
ISO9906 Annex A



● Performance table

| Model | Driving motor | | Q (m³/h) | 5 | 6 | 7 | 8 | 9 | 10 | 11 |
|-------------|---------------|------|----------|-----|------|----|------|------|------|------|
| | (kW) | (hp) | | | | | | | | |
| CHLF(T)8-10 | 0.75 | 1 | H (m) | 9.5 | 9.3 | 9 | 8.5 | 7.5 | 6.5 | 5.5 |
| CHLF(T)8-20 | 0.75 | 1 | | 19 | 18.5 | 18 | 17 | 15 | 13 | 11 |
| CHLF(T)8-30 | 1.1 | 1.5 | | 29 | 28 | 27 | 25.5 | 22.5 | 20 | 17.5 |
| CHLF(T)8-40 | 1.5 | 2 | | 39 | 38 | 36 | 34 | 30 | 26.5 | 22.5 |
| CHLF(T)8-50 | 2.2 | 3 | | 49 | 47 | 45 | 42.5 | 38 | 33.5 | 28 |

● Installation sketch

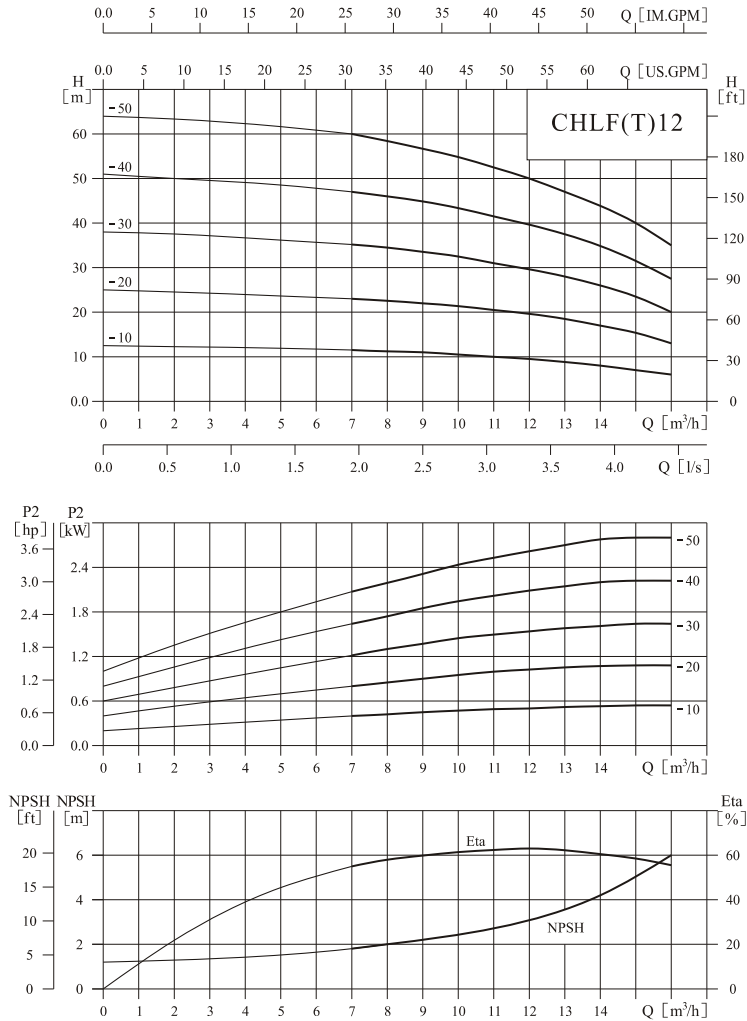


● Size and weight

| Motor | Model | Size (mm) | | | | | | Weight (kg) |
|------------------------------|-------------|-----------|-----|-----|-----|---------|------|-------------|
| | | L1 | L2 | L3 | D | H | K | |
| Three-phase/ single-phase | CHLF(T)8-10 | 395 | 126 | 108 | 170 | 230/265 | /100 | 20 |
| | CHLF(T)8-20 | 395 | 126 | 108 | 170 | 230/265 | /100 | 20 |
| | CHLF(T)8-30 | 425 | 156 | 138 | 170 | 230/265 | /100 | 25 |
| | CHLF(T)8-40 | 490 | 186 | 168 | 180 | 240/270 | /100 | 28 |
| | CHLF(T)8-50 | 520 | 216 | 198 | 180 | 240/270 | /100 | 30 |

● Performance curve

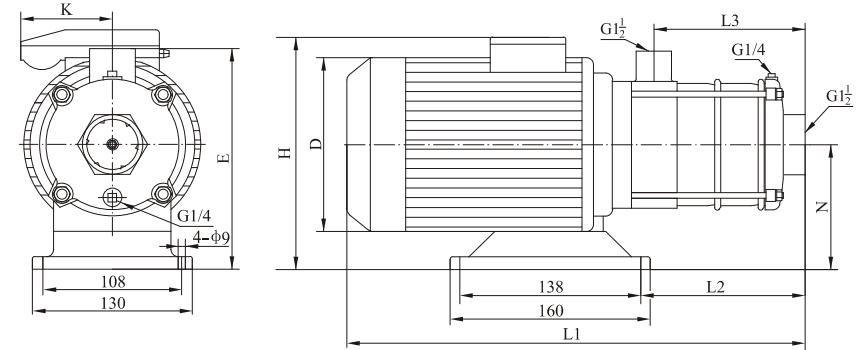
ISO9906 Annex A



● Performance table

| Model | Driving motor | | Q (m³/h) | 7 | 8 | 9 | 10 | 11 | 12 | 13 | 14 | 15 | 16 |
|--------------|---------------|------|----------|------|------|------|------|------|------|------|----|------|------|
| | (kW) | (hp) | | | | | | | | | | | |
| CHLF(T)12-10 | 0.75 | 1 | H (m) | 11.5 | 11.2 | 11 | 10.5 | 10 | 9.5 | 9 | 8 | 7 | 6 |
| CHLF(T)12-20 | 1.2 | 1.6 | | 23 | 22.5 | 22 | 21.5 | 20.5 | 19.5 | 18.5 | 17 | 15.5 | 13 |
| CHLF(T)12-30 | 1.8 | 2.4 | | 35 | 34.5 | 33.5 | 32.5 | 31 | 29.5 | 28 | 26 | 23.5 | 20 |
| CHLF(T)12-40 | 2.4 | 3.3 | | 47 | 46 | 45 | 43.5 | 41.5 | 39.5 | 37.5 | 35 | 31.5 | 27.5 |
| CHLF(T)12-50 | 3 | 4 | | 60 | 58 | 56.5 | 55 | 52.5 | 50 | 47 | 44 | 40 | 35 |

● Installation sketch

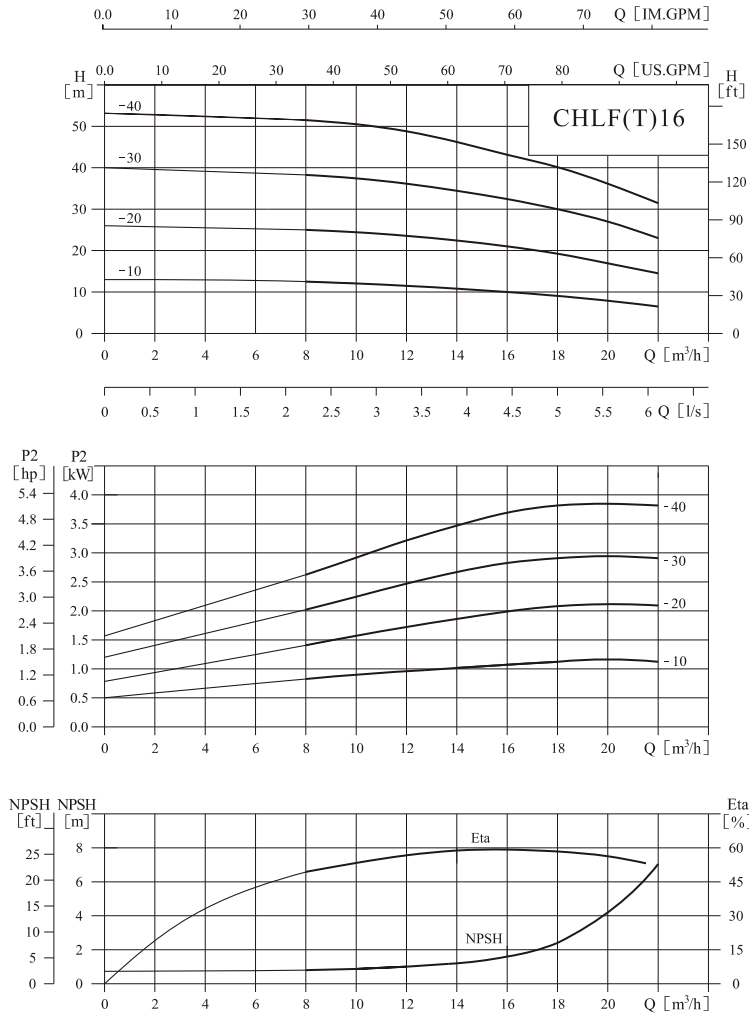


● Size and weight

| Motor | Model | Size (mm) | | | | | | | | Weight (kg) |
|------------------------------|--------------|-----------|-----|-----|---------|-----|-----|-----|------|-------------|
| | | L1 | L2 | L3 | H | D | E | N | K | |
| Three-phase/ single-phase | CHLF(T)12-10 | 395 | 126 | 108 | 230/265 | 170 | 228 | 118 | /100 | 20 |
| | CHLF(T)12-20 | 395 | 126 | 108 | 230/265 | 170 | 228 | 118 | /100 | 21 |
| | CHLF(T)12-30 | 460 | 156 | 138 | 240/270 | 180 | 228 | 118 | /100 | 25 |
| | CHLF(T)12-40 | 490 | 186 | 168 | 240/270 | 180 | 228 | 118 | /100 | 29 |
| | CHLF(T)12-50 | 555 | 216 | 198 | 270/ | 195 | 240 | 126 | | 34 |

● Performance curve

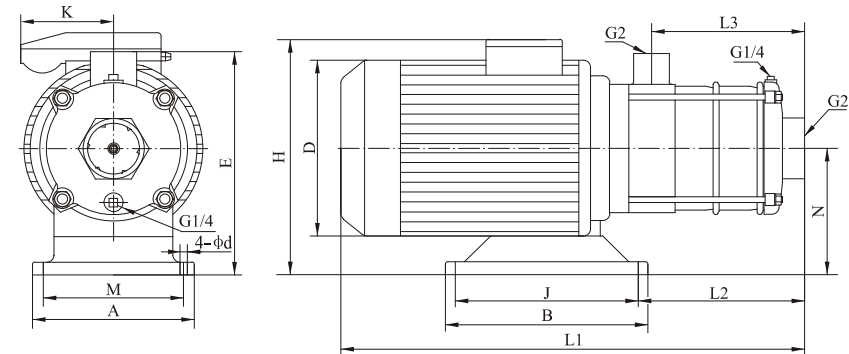
ISO9906 Annex A



● Performance table

| Model | Driving motor | | Q (m³/h) | 8 | 10 | 12 | 14 | 16 | 18 | 20 | 22 |
|--------------|---------------|------|----------|-------|------|------|------|----|------|-----|------|
| | (kW) | (hp) | | H (m) | | | | | | | |
| CHLF(T)16-10 | 1.1 | 1.5 | H (m) | 12.5 | 12 | 11.5 | 10.5 | 10 | 9 | 7.5 | 6.5 |
| CHLF(T)16-20 | 2.2 | 3 | | 25.5 | 24 | 23 | 22 | 21 | 19 | 17 | 14.5 |
| CHLF(T)16-30 | 3 | 4 | | 38.5 | 37 | 36 | 34 | 32 | 30 | 27 | 23 |
| CHLF(T)16-40 | 4 | 5.5 | | 51.5 | 50.5 | 49 | 46 | 43 | 40.5 | 36 | 31.5 |

● Installation sketch

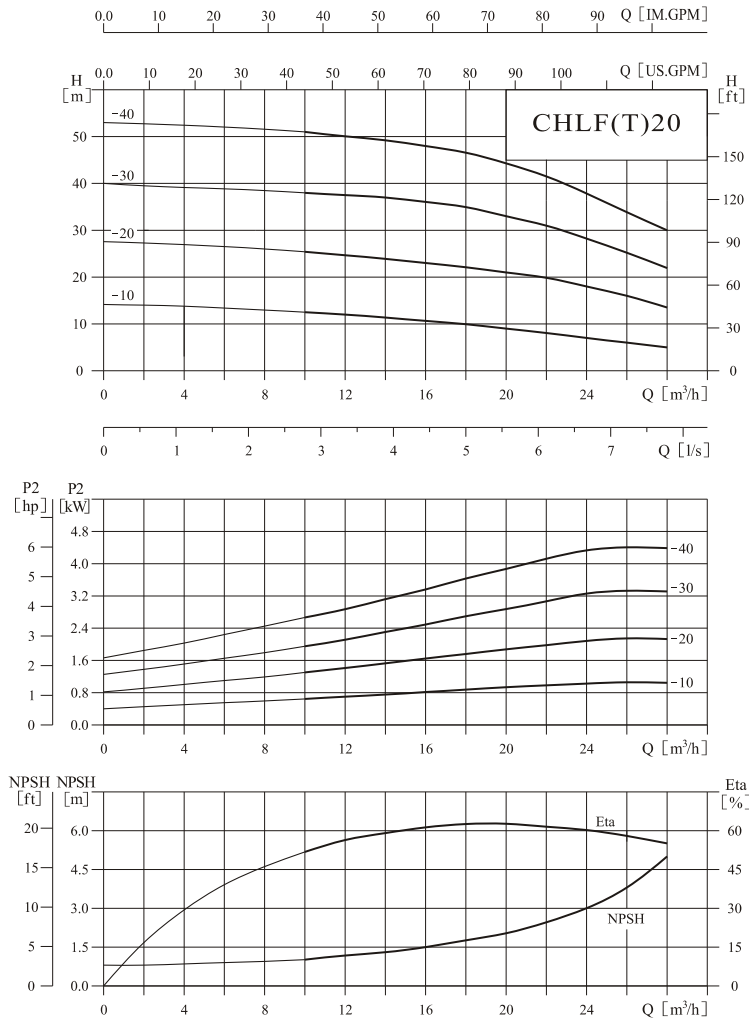


● Size and weight

| Motor | Model | Size (mm) | | | | | | | | | | | Weight (kg) | | |
|------------------------------|--------------|-----------|-----|-----|---------|-----|-----|-----|-----|-----|-----|-----|-------------|------|------|
| | | L1 | L2 | L3 | H | D | E | N | A | M | B | J | | d | K |
| Three-phase/ single-phase | CHLF(T)16-10 | 423 | 151 | 126 | 230/265 | 170 | 227 | 117 | 130 | 108 | 160 | 138 | 9 | /100 | 17.5 |
| | CHLF(T)16-20 | 455 | 151 | 126 | 240/270 | 180 | 228 | 118 | 130 | 108 | 160 | 138 | 9 | /100 | 27 |
| | CHLF(T)16-30 | 561 | 196 | 171 | 270/ | 195 | 240 | 130 | 130 | 108 | 160 | 138 | 9 | | 33 |
| | CHLF(T)16-40 | 621 | 340 | 216 | 270/ | 220 | 230 | 120 | 230 | 190 | 170 | 140 | 12 | | 41 |

● Performance curve

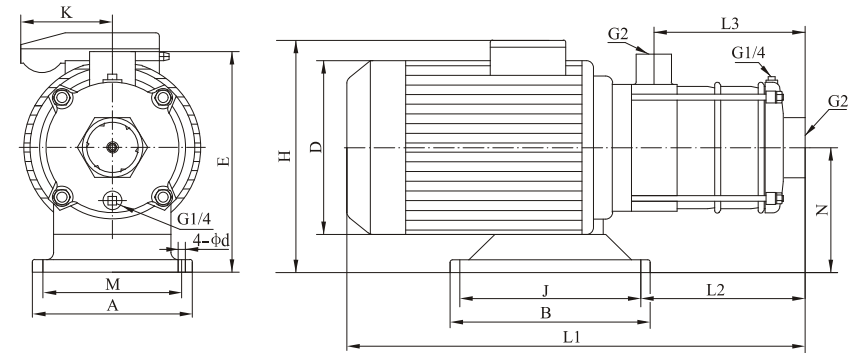
ISO9906 Annex A



● Performance table

| Model | Driving motor | | Q (m³/h) | 10 | 12 | 14 | 16 | 18 | 20 | 22 | 24 | 26 | 28 |
|--------------|---------------|------|----------|-------|------|------|----|------|------|------|------|------|------|
| | (kW) | (hp) | | H (m) | | | | | | | | | |
| CHLF(T)20-10 | 1.1 | 1.5 | H (m) | 12.5 | 12 | 11.5 | 11 | 10.5 | 9.5 | 8.5 | 7.5 | 6.5 | 5.5 |
| CHLF(T)20-20 | 2.2 | 3 | | 25.5 | 24.5 | 24 | 23 | 22 | 21 | 20 | 18 | 16 | 13.5 |
| CHLF(T)20-30 | 4 | 5.5 | | 38 | 37.5 | 37 | 36 | 35 | 33 | 31 | 28 | 25 | 22 |
| CHLF(T)20-40 | 4.4 | 6 | | 51 | 50 | 49 | 48 | 47 | 44.5 | 41.5 | 37.5 | 33.5 | 30 |

● Installation sketch

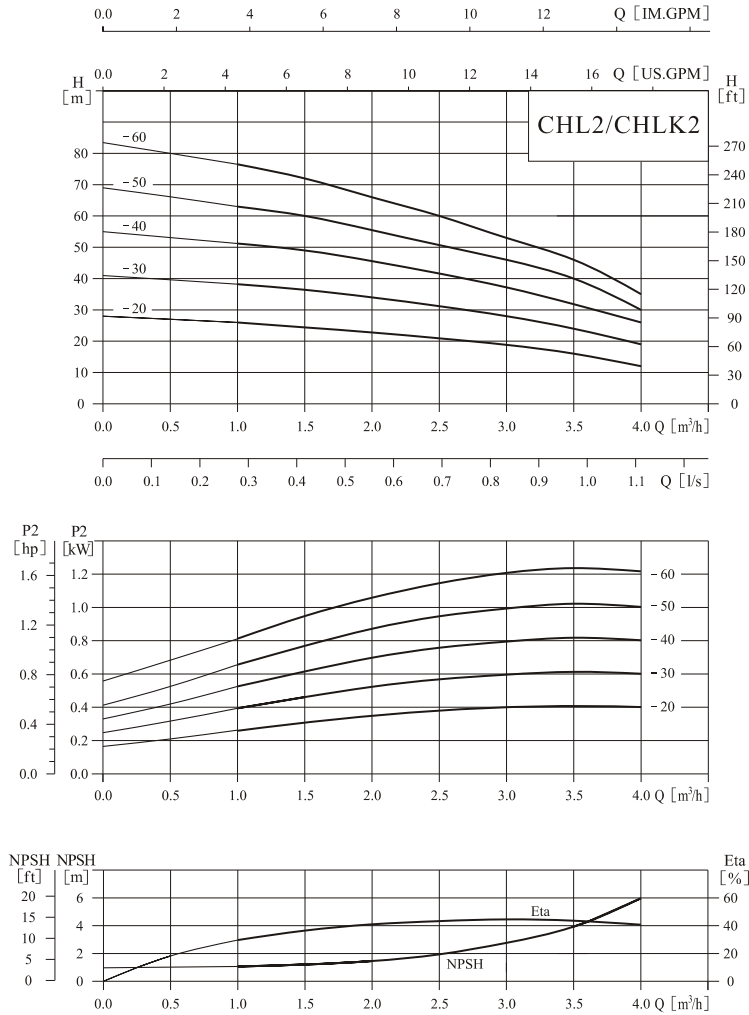


● Size and weight

| Motor | Model | Size (mm) | | | | | | | | | | | | Weight (kg) | |
|------------------------------|--------------|-----------|-----|-----|---------|-----|-----|-----|-----|-----|-----|-----|----|-------------|------|
| | | L1 | L2 | L3 | H | D | E | N | A | M | B | J | d | | K |
| Three-phase/ single-phase | CHLF(T)20-10 | 423 | 151 | 126 | 230/265 | 170 | 227 | 117 | 130 | 108 | 160 | 138 | 9 | /100 | 17.5 |
| | CHLF(T)20-20 | 455 | 151 | 126 | 240/270 | 180 | 228 | 118 | 130 | 108 | 160 | 138 | 9 | /100 | 27 |
| | CHLF(T)20-30 | 576 | 294 | 171 | 270/ | 220 | 230 | 120 | 230 | 190 | 170 | 140 | 12 | | 41 |
| | CHLF(T)20-40 | 621 | 340 | 216 | 270/ | 220 | 230 | 120 | 230 | 190 | 170 | 140 | 12 | | 44 |

● Performance curve

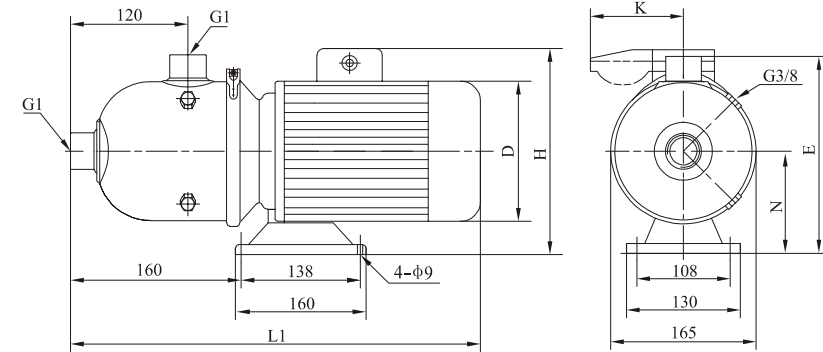
ISO9906 Annex A



● Performance table

| Model | Driving motor | | Q (m³/h) | 1 | 1.5 | 2 | 2.5 | 3 | 3.5 | 4 |
|---------|---------------|------|-------------|----|-----|----|-----|----|-----|----|
| | (kW) | (hp) | | | | | | | | |
| CHL2-20 | 0.55 | 0.75 | H (m) | 26 | 24 | 21 | 19 | 18 | 16 | 12 |
| CHL2-30 | 0.75 | 1 | | 38 | 36 | 33 | 29 | 27 | 24 | 19 |
| CHL2-40 | 1.1 | 1.5 | | 51 | 48 | 44 | 40 | 36 | 32 | 26 |
| CHL2-50 | 1.1 | 1.5 | | 63 | 60 | 55 | 50 | 46 | 40 | 30 |
| CHL2-60 | 1.5 | 2 | | 75 | 72 | 66 | 60 | 53 | 46 | 35 |

● Installation sketch

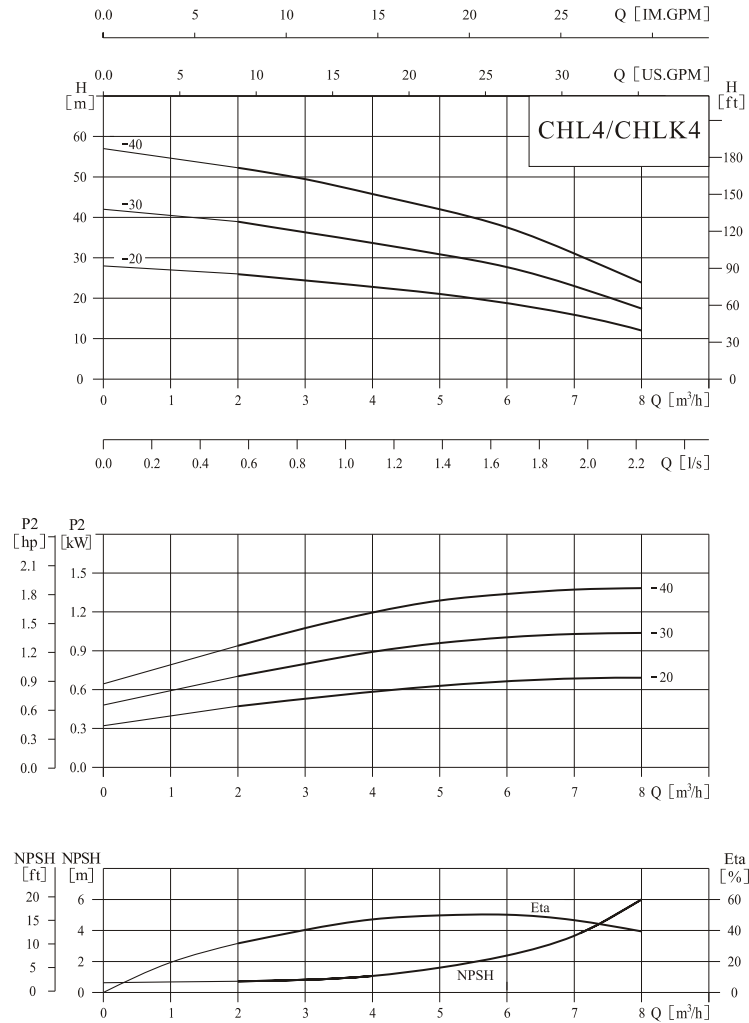


● Size and weight

| Motor | Model | Size (mm) | | | | | | Weight (kg) |
|------------------------------|---------|-----------|---------|-----|-----|-----|------|-------------|
| | | L1 | H | N | D | E | K | |
| Three-phase/ single-phase | CHL2-20 | 400 | 215/230 | 110 | 145 | 210 | /96 | 13 |
| | CHL2-30 | 420 | 220/245 | 110 | 160 | 210 | /100 | 13 |
| | CHL2-40 | 420 | 230/245 | 110 | 170 | 210 | /100 | 15 |
| | CHL2-50 | 420 | 230/245 | 110 | 170 | 210 | /100 | 15 |
| | CHL2-60 | 470 | 240/260 | 118 | 170 | 218 | /100 | 20 |

● Performance curve

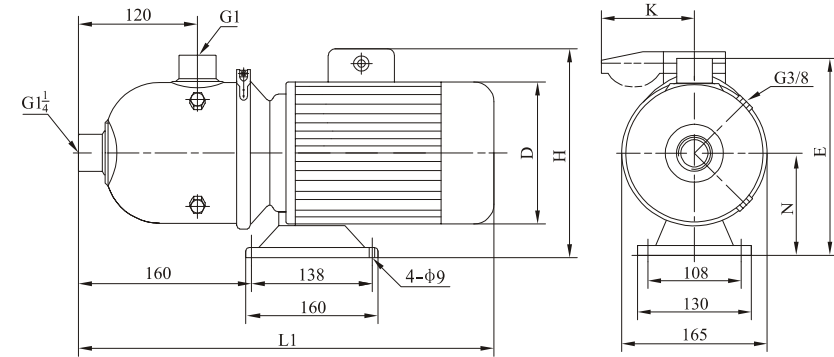
ISO9906 Annex A



● Performance table

| Model | Driving motor | | Q (m³/h) | 2 | 3 | 4 | 5 | 6 | 7 | 8 |
|---------|---------------|------|----------|----|----|----|----|----|----|----|
| | (kW) | (hp) | | | | | | | | |
| CHL4-20 | 0.75 | 1 | H (m) | 26 | 24 | 22 | 21 | 19 | 16 | 12 |
| CHL4-30 | 1.1 | 1.5 | | 39 | 36 | 33 | 31 | 28 | 23 | 18 |
| CHL4-40 | 1.5 | 2 | | 53 | 49 | 44 | 42 | 38 | 31 | 24 |

● Installation sketch

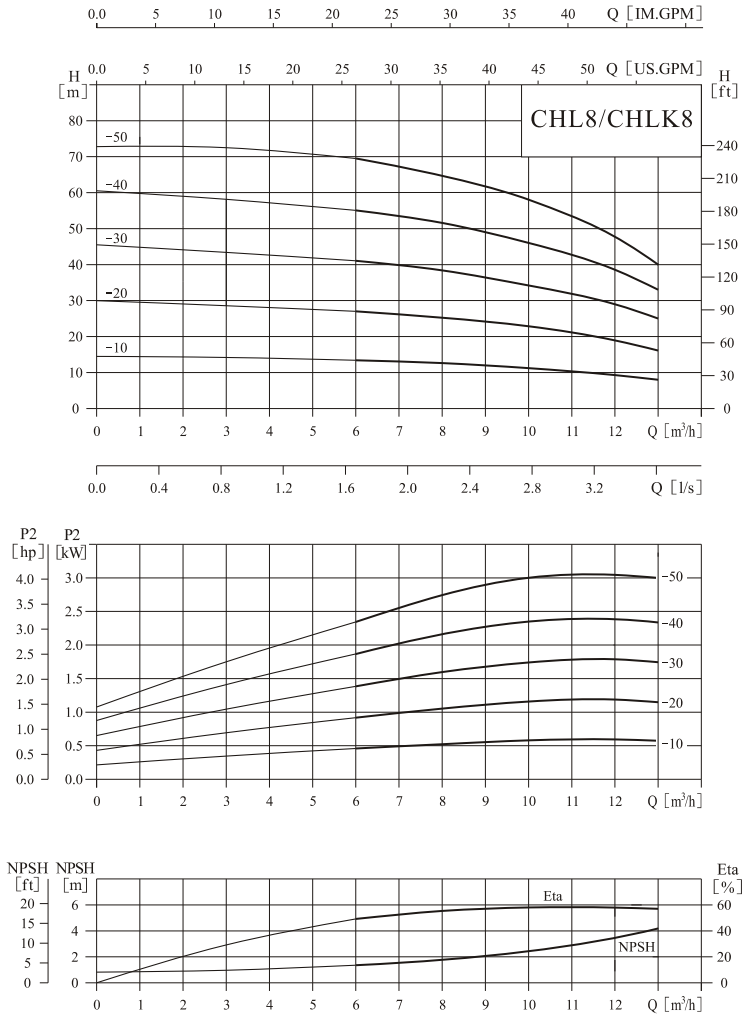


● Size and weight

| Motor | Model | Size (mm) | | | | | | Weight (kg) |
|------------------------------|---------|-----------|---------|-----|-----|-----|------|-------------|
| | | L1 | H | N | D | E | K | |
| Three-phase/ single-phase | CHL4-20 | 420 | 230/245 | 110 | 160 | 210 | /100 | 12 |
| | CHL4-30 | 420 | 230/245 | 110 | 170 | 210 | /100 | 15 |
| | CHL4-40 | 470 | 240/260 | 118 | 170 | 228 | /100 | 20 |

Performance curve

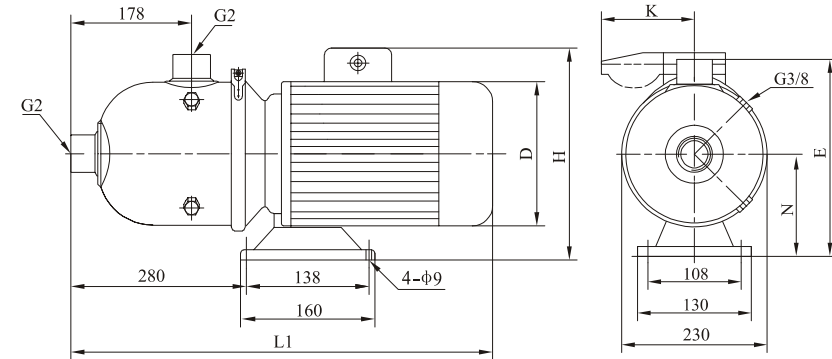
ISO9906 Annex A



Performance table

| Model | Driving motor | | Q (m³/h) | 6 | 7 | 8 | 9 | 10 | 11 | 12 | 13 |
|---------|---------------|------|----------|----|----|----|------|----|----|----|----|
| | (kW) | (hp) | | | | | | | | | |
| CHL8-10 | 0.75 | 1 | H (m) | 14 | 13 | 12 | 11.5 | 11 | 10 | 9 | 8 |
| CHL8-20 | 1.5 | 2 | | 27 | 26 | 25 | 24 | 23 | 21 | 19 | 16 |
| CHL8-30 | 2.2 | 3 | | 41 | 40 | 39 | 37 | 34 | 33 | 29 | 25 |
| CHL8-40 | 3 | 4 | | 55 | 54 | 52 | 50 | 45 | 43 | 39 | 33 |
| CHL8-50 | 3 | 4 | | 69 | 67 | 65 | 62 | 55 | 53 | 49 | 40 |

Installation sketch

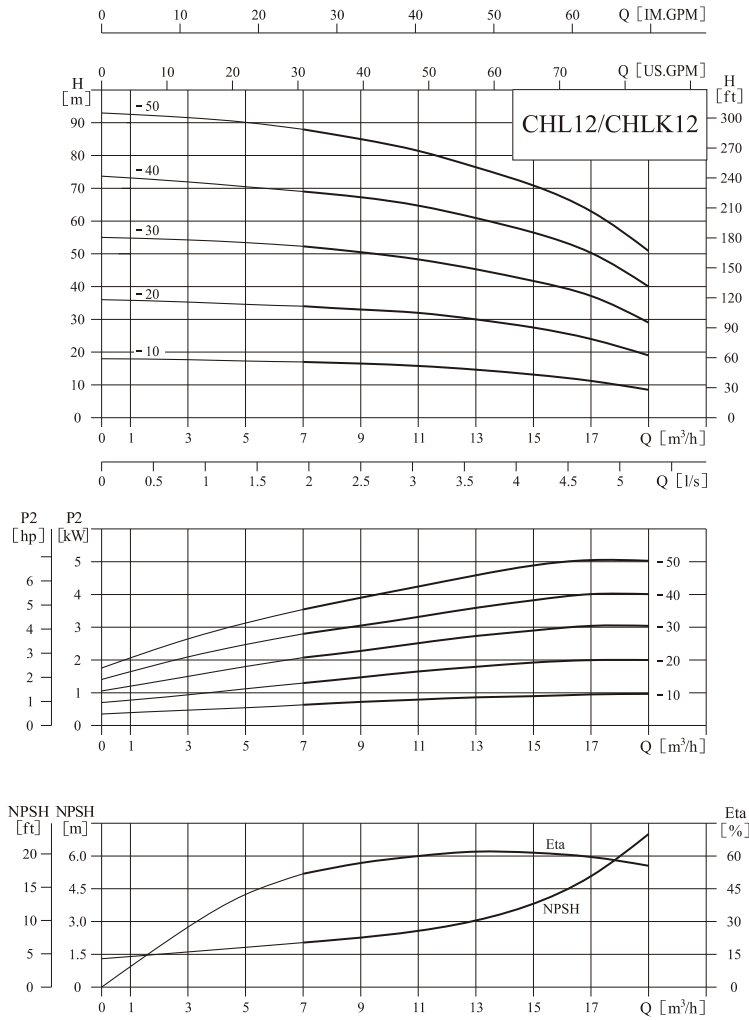


Size and weight

| Motor | Model | Size (mm) | | | | | | Weight (kg) |
|------------------------------|---------|-----------|---------|-----|-----|-----|------|-------------|
| | | L1 | H | N | D | E | K | |
| Three-phase/ single-phase | CHL8-10 | 560 | 230/265 | 117 | 160 | 263 | /100 | 20 |
| | CHL8-20 | 580 | 230/270 | 118 | 170 | 264 | /100 | 25 |
| | CHL8-30 | 580 | 230/270 | 118 | 180 | 264 | /100 | 25 |
| | CHL8-40 | 610 | 270/ | 128 | 195 | 274 | | 30 |
| | CHL8-50 | 610 | 270/ | 128 | 195 | 274 | | 30 |

● Performance curve

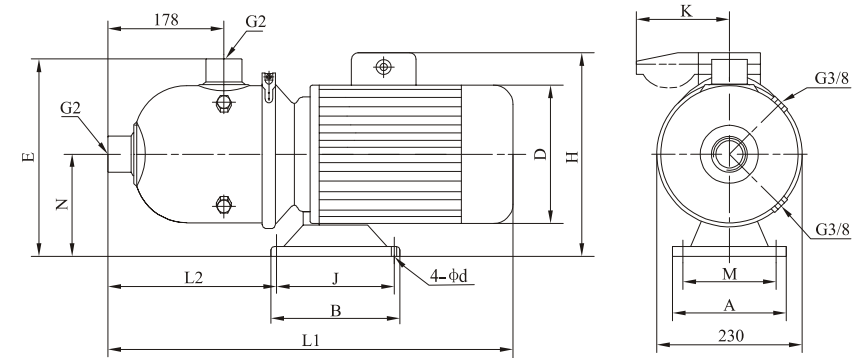
ISO9906 Annex A



● Performance table

| Model | Driving motor | | Q (m³/h) | 7 | 9 | 11 | 12 | 13 | 15 | 17 | 19 |
|----------|---------------|------|----------|------|------|------|----|------|------|------|------|
| | (kW) | (hp) | | | | | | | | | |
| CHL12-10 | 1.1 | 1.5 | H (m) | 17 | 16.5 | 16 | 15 | 14.5 | 13 | 11.5 | 8.5 |
| CHL12-20 | 2.2 | 3 | | 34 | 33 | 32 | 31 | 30 | 27 | 24.5 | 19 |
| CHL12-30 | 3 | 4 | | 52.5 | 50 | 48.5 | 47 | 45 | 41.5 | 37.5 | 29 |
| CHL12-40 | 4 | 5.5 | | 69 | 67.5 | 65 | 63 | 60.5 | 56 | 50 | 40 |
| CHL12-50 | 5.5 | 7.5 | | 88 | 85 | 82 | 80 | 76 | 70.5 | 63 | 50.5 |

● Installation sketch

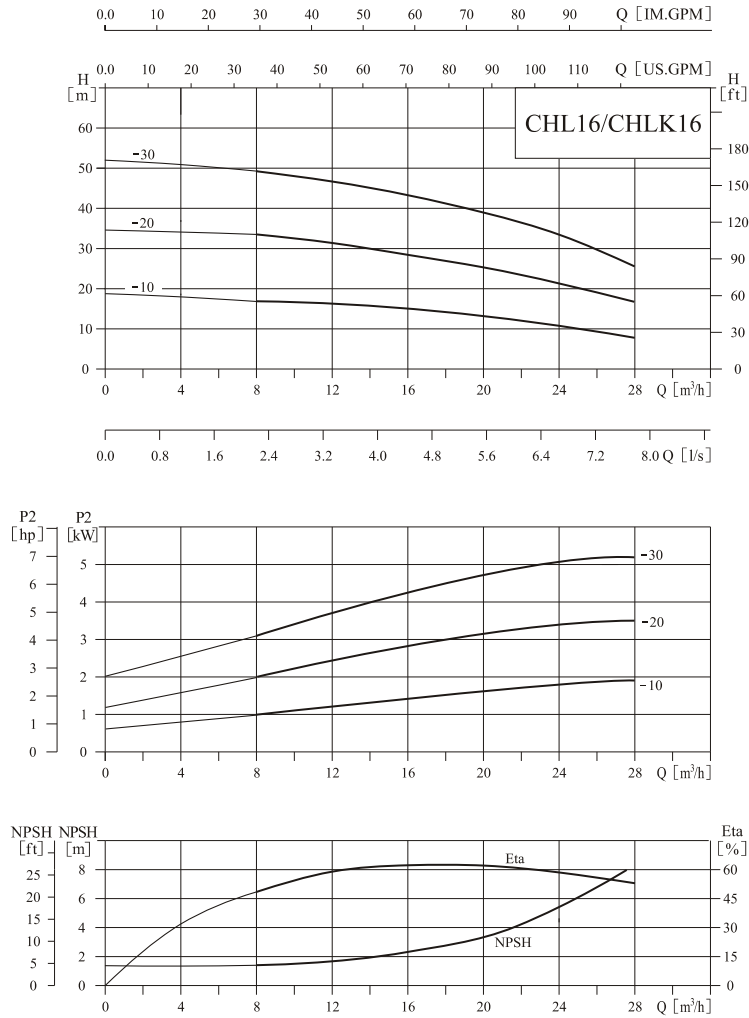


● Size and weight

| Motor | Model | Size (mm) | | | | | | | | | | | Weight (kg) | |
|------------------------------|----------|-----------|-----|---------|-----|-----|-----|-----|-----|-----|-----|----|-------------|----|
| | | L1 | L2 | H | D | E | N | A | M | B | J | d | | K |
| Three-phase/ single-phase | CHL12-10 | 560 | 280 | 230/265 | 180 | 268 | 118 | 130 | 108 | 160 | 138 | 9 | /100 | 22 |
| | CHL12-20 | 580 | 280 | 240/270 | 180 | 268 | 118 | 130 | 108 | 160 | 138 | 9 | /100 | 25 |
| | CHL12-30 | 610 | 270 | 270/ | 195 | 276 | 126 | 130 | 108 | 160 | 138 | 9 | | 32 |
| | CHL12-40 | 650 | 360 | 270/ | 220 | 270 | 120 | 230 | 190 | 170 | 140 | 12 | | 44 |
| | CHL12-50 | 670 | 375 | 305/ | 255 | 282 | 132 | 260 | 216 | 190 | 140 | 12 | | 58 |

● Performance curve

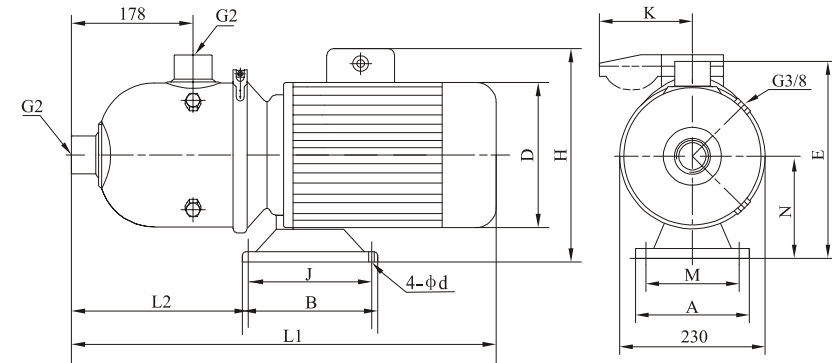
ISO9906 Annex A



● Performance table

| Model | Driving motor | | Q (m³/h) | 8 | 12 | 16 | 20 | 24 | 28 |
|----------|---------------|------|----------|----|----|----|----|----|----|
| | (kW) | (hp) | | | | | | | |
| CHL16-10 | 2.2 | 4 | H (m) | 17 | 16 | 15 | 13 | 11 | 8 |
| CHL16-20 | 4.0 | 5.5 | | 33 | 31 | 29 | 26 | 21 | 17 |
| CHL16-30 | 5.5 | 7.5 | | 49 | 47 | 44 | 39 | 32 | 25 |

● Installation sketch

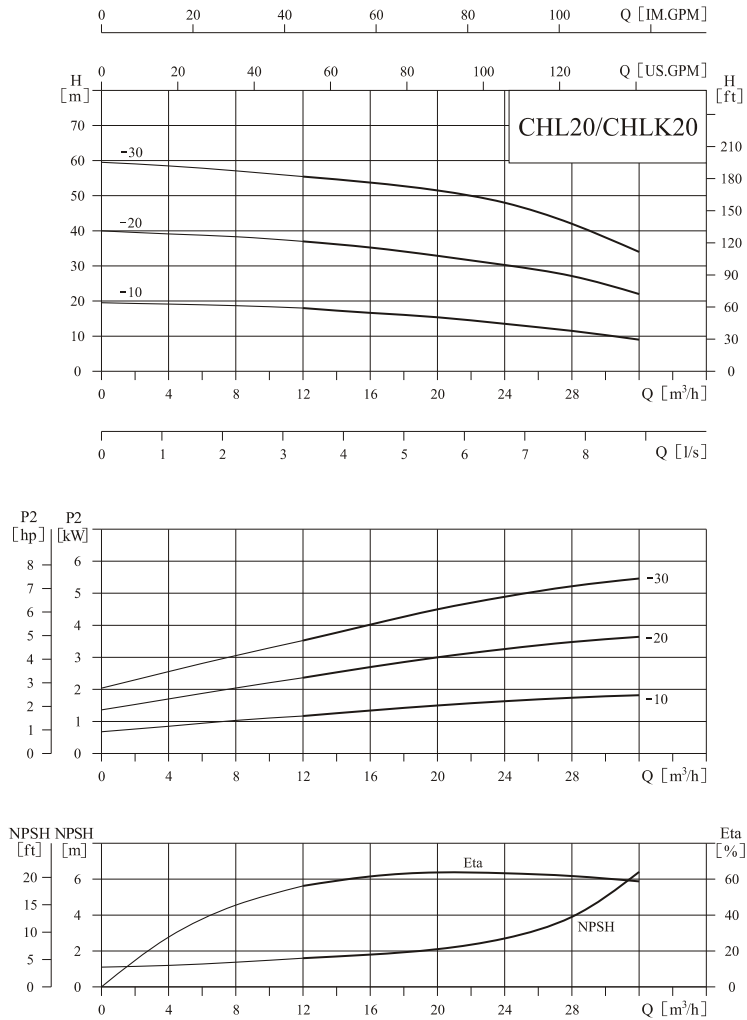


● Size and weight

| Motor | Model | Size (mm) | | | | | | | | | | | | Weight (kg) |
|------------------------------|----------|-----------|-----|---------|-----|-----|-----|-----|-----|-----|-----|----|------|-------------|
| | | L1 | L2 | H | E | B | D | J | A | M | N | d | K | |
| Three-phase/ single-phase | CHL16-10 | 580 | 280 | 230/270 | 264 | 160 | 180 | 138 | 130 | 108 | 118 | 9 | /100 | 25 |
| | CHL16-20 | 650 | 360 | 270/ | 270 | 170 | 220 | 140 | 230 | 190 | 120 | 12 | | 43 |
| | CHL16-30 | 670 | 375 | 305/ | 281 | 190 | 255 | 140 | 260 | 216 | 132 | 12 | | 50 |

● Performance curve

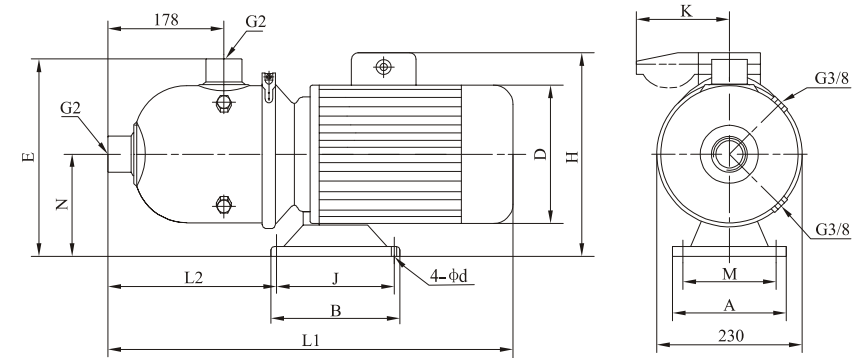
ISO9906 Annex A



● Performance table

| Model | Driving motor | | Q (m³/h) | H (m) | | | | | | | | | | |
|----------|---------------|------|----------|-------|------|------|----|------|------|------|------|------|------|----|
| | (kW) | (hp) | | 12 | 14 | 16 | 18 | 20 | 22 | 24 | 26 | 28 | 30 | 32 |
| CHL20-10 | 2.2 | 3 | | 18 | 17 | 16.5 | 16 | 15.5 | 14.5 | 13.5 | 12.5 | 11.5 | 10 | 9 |
| CHL20-20 | 4 | 5.5 | | 37 | 36 | 35 | 34 | 32.5 | 31.5 | 30 | 29 | 27.5 | 24.5 | 22 |
| CHL20-30 | 5.5 | 7.5 | | 55 | 54.5 | 54 | 53 | 51.5 | 50.5 | 48 | 45.5 | 42 | 38.5 | 34 |

● Installation sketch

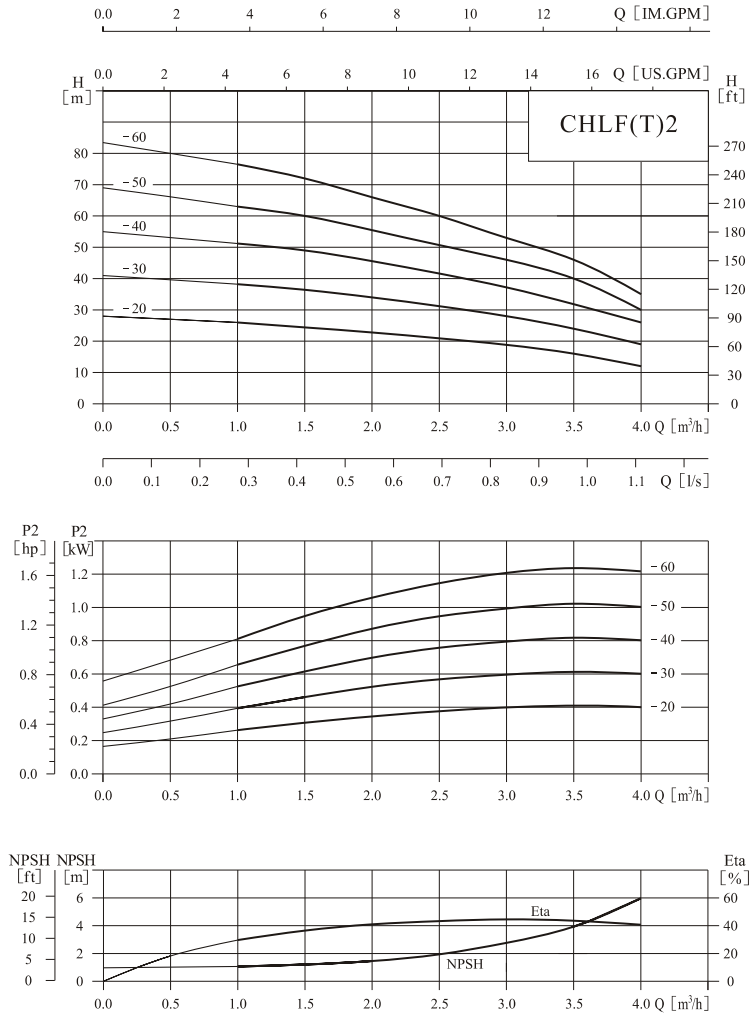


● Size and weight

| Motor | Model | Size (mm) | | | | | | | | | | | Weight (kg) | |
|------------------------------|----------|-----------|-----|---------|-----|-----|-----|-----|-----|-----|-----|----|-------------|----|
| | | L1 | L2 | H | D | E | N | A | M | B | J | d | | K |
| Three-phase/ single-phase | CHL20-10 | 580 | 280 | 240/270 | 180 | 268 | 118 | 130 | 108 | 160 | 138 | 9 | /100 | 26 |
| | CHL20-20 | 650 | 360 | 270/ | 220 | 270 | 120 | 230 | 190 | 170 | 140 | 12 | | 43 |
| | CHL20-30 | 670 | 375 | 305/ | 255 | 282 | 132 | 260 | 216 | 190 | 140 | 12 | | 56 |

● Performance curve

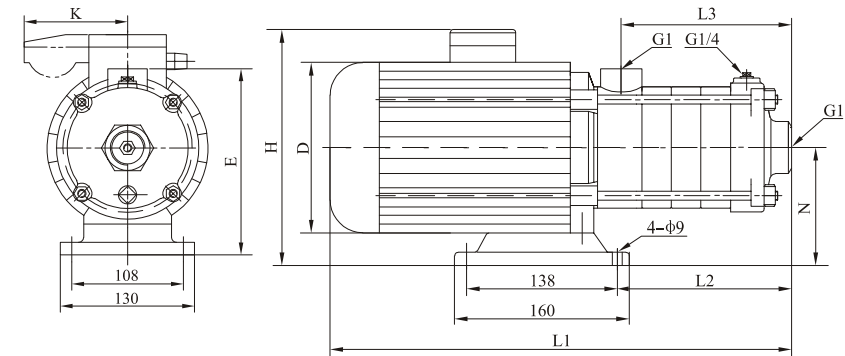
ISO9906 Annex A



● Performance table

| Model | Driving motor | | Q (m³/h) | 1 | 1.5 | 2 | 2.5 | 3 | 3.5 | 4 |
|-------------|---------------|------|----------|----|-----|----|-----|----|-----|----|
| | (kW) | (hp) | | | | | | | | |
| CHLF(T)2-20 | 0.55 | 0.75 | H (m) | 26 | 24 | 21 | 19 | 18 | 16 | 12 |
| CHLF(T)2-30 | 0.75 | 1 | | 38 | 36 | 33 | 29 | 27 | 24 | 19 |
| CHLF(T)2-40 | 1.1 | 1.5 | | 51 | 48 | 44 | 40 | 36 | 32 | 26 |
| CHLF(T)2-50 | 1.1 | 1.5 | | 63 | 60 | 55 | 50 | 46 | 40 | 30 |
| CHLF(T)2-60 | 1.5 | 2 | | 75 | 72 | 66 | 60 | 53 | 46 | 35 |

● Installation sketch

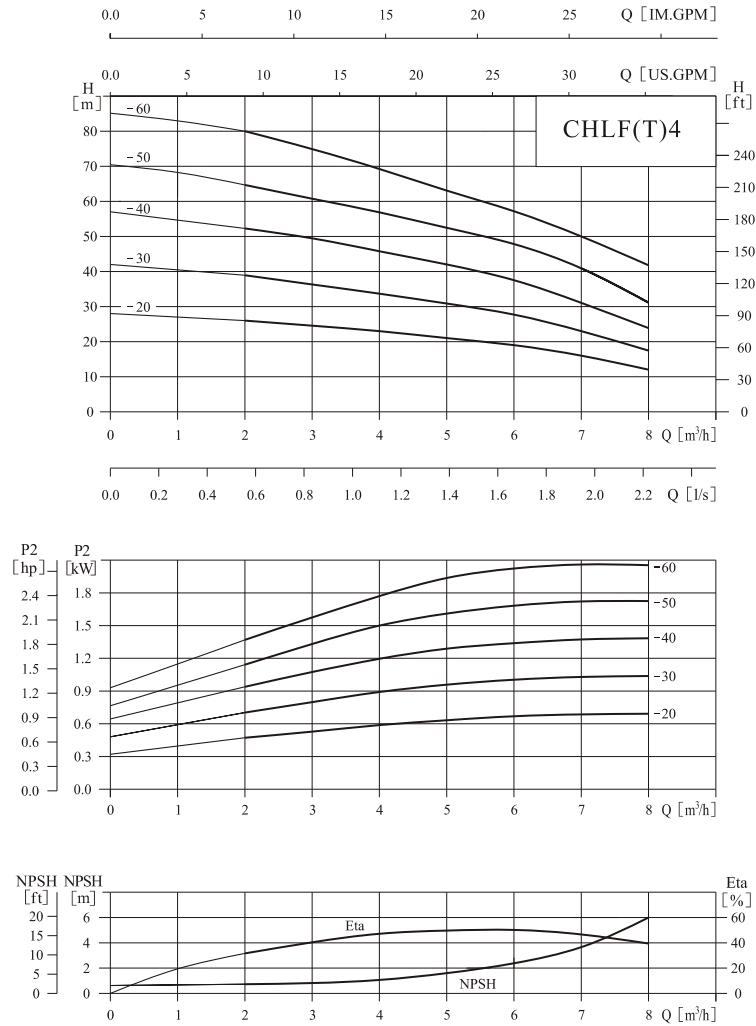


● Size and weight

| Motor | Model | Size (mm) | | | | | | | | Weight (kg) |
|------------------------------|-------------|-----------|-----|-----|-----|---------|-----|-----|------|-------------|
| | | L1 | L2 | L3 | E | H | N | D | K | |
| Three-phase/ single-phase | CHLF(T)2-20 | 305 | 87 | 84 | 182 | 230/230 | 110 | 145 | /96 | 15 |
| | CHLF(T)2-30 | 370 | 105 | 102 | 182 | 230/245 | 110 | 170 | /100 | 17 |
| | CHLF(T)2-40 | 388 | 123 | 120 | 182 | 230/245 | 110 | 170 | /100 | 17 |
| | CHLF(T)2-50 | 406 | 141 | 138 | 182 | 230/245 | 110 | 170 | /100 | 17 |
| | CHLF(T)2-60 | 465 | 159 | 156 | 190 | 240/260 | 118 | 170 | /100 | 20 |

● Performance curve

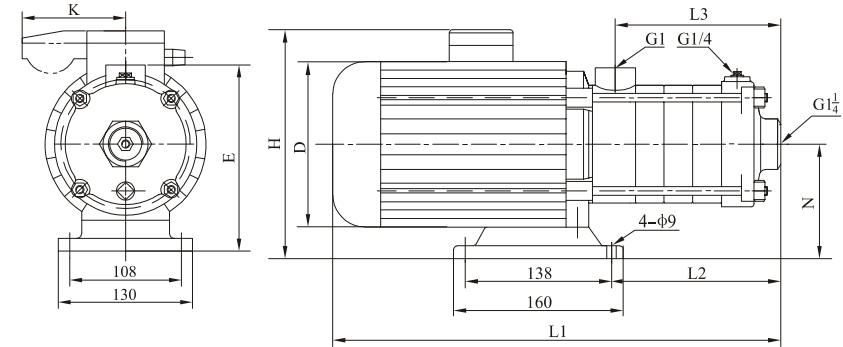
ISO9906 Annex A



● Performance table

| Model | Driving motor | | Q (m³/h) | 2 | 3 | 4 | 5 | 6 | 7 | 8 |
|-------------|---------------|------|----------|----|----|----|----|----|----|----|
| | (kW) | (hp) | | | | | | | | |
| CHLF(T)4-20 | 0.75 | 1 | H (m) | 26 | 24 | 22 | 21 | 19 | 16 | 12 |
| CHLF(T)4-30 | 1.1 | 1.5 | | 39 | 36 | 33 | 31 | 28 | 23 | 18 |
| CHLF(T)4-40 | 1.5 | 2 | | 53 | 49 | 44 | 42 | 38 | 31 | 24 |
| CHLF(T)4-50 | 2.2 | 3 | | 65 | 62 | 56 | 52 | 48 | 42 | 32 |
| CHLF(T)4-60 | 2.2 | 3 | | 80 | 75 | 69 | 62 | 58 | 50 | 42 |

● Installation sketch

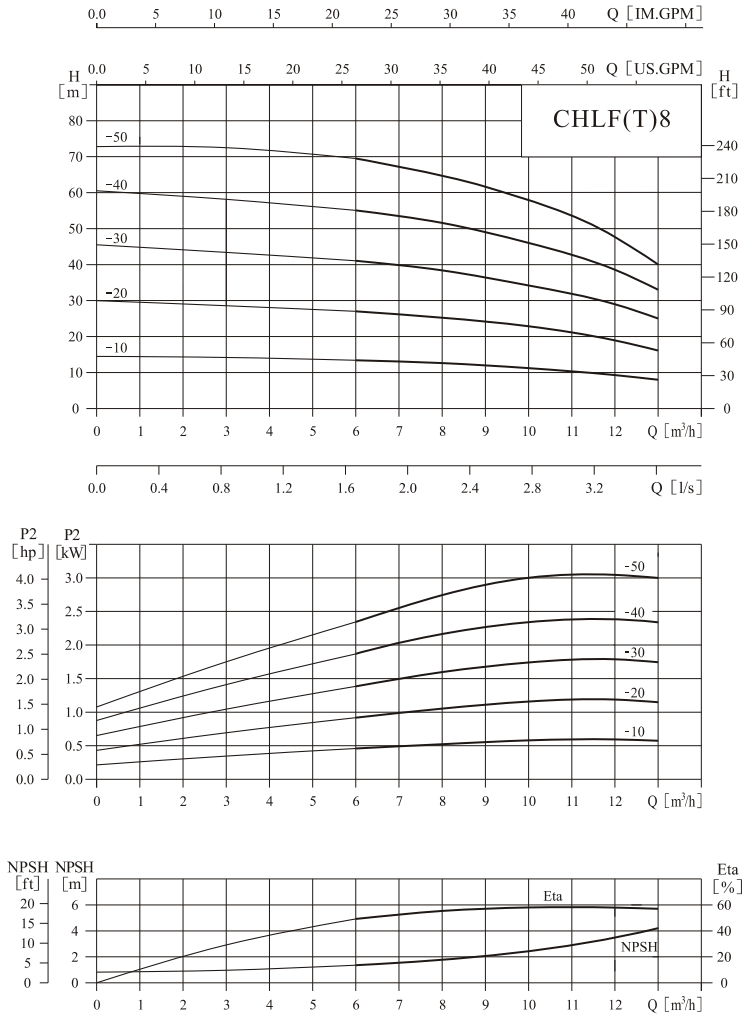


● Size and weight

| Motor | Model | Size (mm) | | | | | | | | Weight (kg) |
|------------------------------|-------------|-----------|-----|-----|-----|---------|-----|-----|------|-------------|
| | | L1 | L2 | L3 | E | H | N | D | K | |
| Three-phase/ single-phase | CHLF(T)4-20 | 359 | 105 | 102 | 182 | 230/245 | 110 | 170 | /100 | 15 |
| | CHLF(T)4-30 | 395 | 132 | 129 | 182 | 230/245 | 110 | 170 | /100 | 17 |
| | CHLF(T)4-40 | 465 | 159 | 156 | 190 | 240/260 | 118 | 170 | /100 | 20 |
| | CHLF(T)4-50 | 492 | 186 | 183 | 190 | 240/260 | 118 | 180 | /100 | 25 |
| | CHLF(T)4-60 | 519 | 213 | 210 | 190 | 240/260 | 118 | 180 | /100 | 25 |

● Performance curve

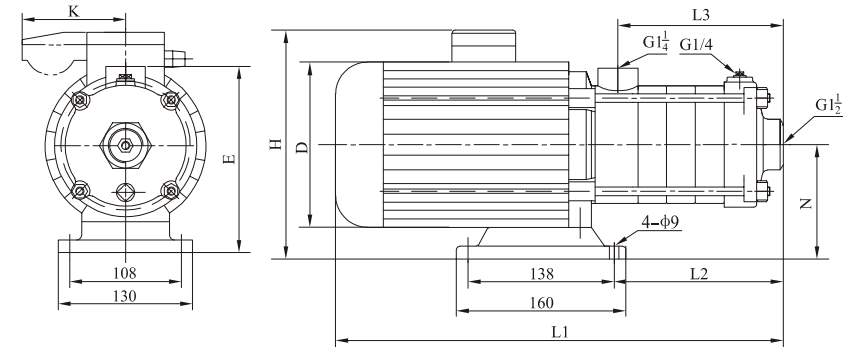
ISO9906 Annex A



● Performance table

| Model | Driving motor | | Q (m³/h) | 6 | 7 | 8 | 9 | 10 | 11 | 12 | 13 |
|-------------|---------------|------|-------------|----|----|----|------|----|----|----|----|
| | (kW) | (hp) | | | | | | | | | |
| CHLF(T)8-10 | 0.75 | 1 | H (m) | 14 | 13 | 12 | 11.5 | 11 | 10 | 9 | 8 |
| CHLF(T)8-20 | 1.5 | 2 | | 27 | 26 | 25 | 24 | 23 | 21 | 19 | 16 |
| CHLF(T)8-30 | 2.2 | 3 | | 41 | 40 | 39 | 37 | 34 | 33 | 29 | 25 |
| CHLF(T)8-40 | 3 | 4 | | 55 | 54 | 52 | 50 | 45 | 43 | 39 | 33 |
| CHLF(T)8-50 | 3 | 4 | | 69 | 67 | 65 | 62 | 55 | 53 | 49 | 40 |

● Installation sketch

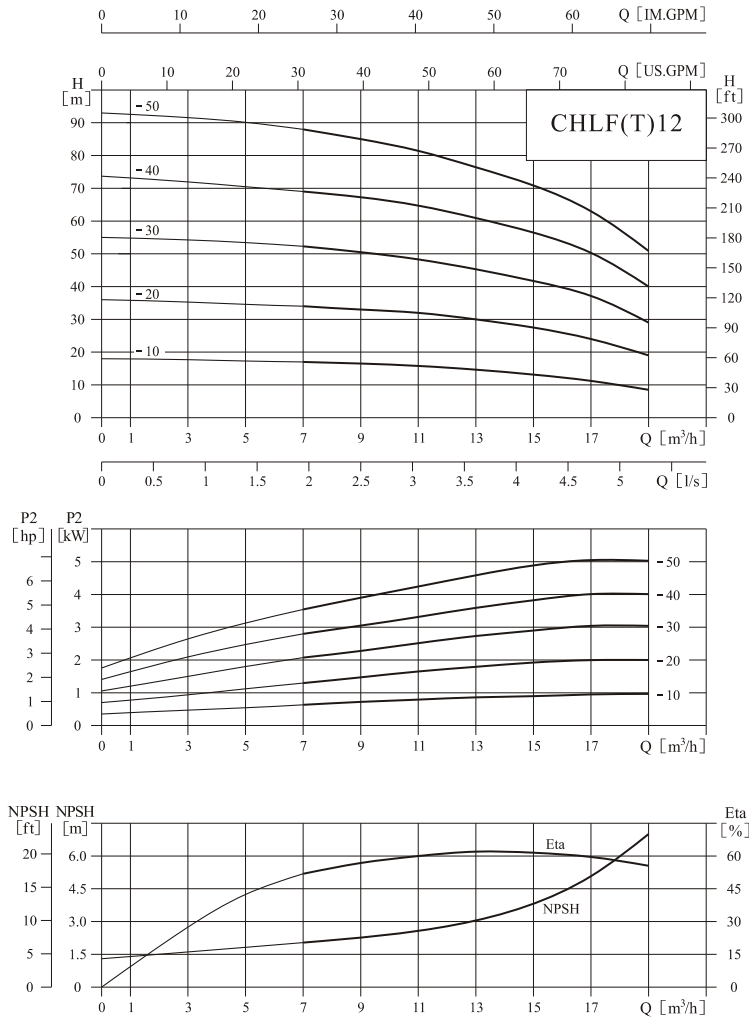


● Size and weight

| Motor | Model | Size (mm) | | | | | | | | Weight (kg) |
|------------------------------|-------------|-----------|-----|-----|-----|---------|-----|-----|------|-------------|
| | | L1 | L2 | L3 | E | H | N | D | K | |
| Three-phase/ single-phase | CHLF(T)8-10 | 395 | 128 | 108 | 227 | 230/265 | 117 | 170 | /100 | 22 |
| | CHLF(T)8-20 | 430 | 128 | 108 | 228 | 240/270 | 118 | 170 | /100 | 25 |
| | CHLF(T)8-30 | 460 | 158 | 138 | 228 | 240/270 | 118 | 170 | /100 | 27 |
| | CHLF(T)8-40 | 550 | 188 | 168 | 238 | 270/ | 128 | 195 | | 32 |
| | CHLF(T)8-50 | 580 | 218 | 198 | 238 | 270/ | 128 | 195 | | 32 |

● Performance curve

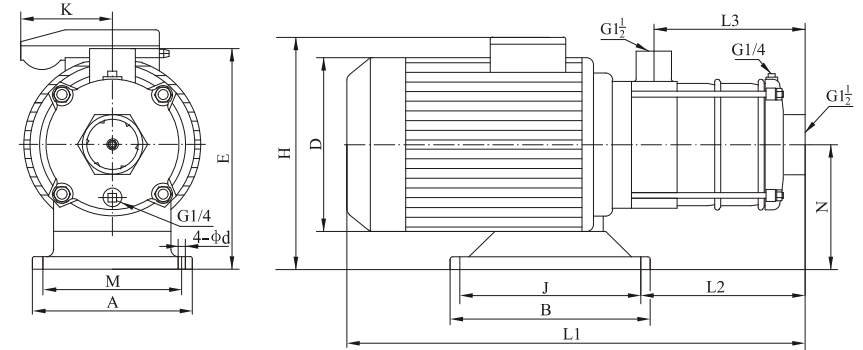
ISO9906 Annex A



● Performance table

| Model | Driving motor | | Q (m³/h) | 7 | 9 | 11 | 12 | 13 | 15 | 17 | 19 |
|--------------|---------------|------|----------|------|------|------|----|------|------|------|------|
| | (kW) | (hp) | | | | | | | | | |
| CHLF(T)12-10 | 1.1 | 1.5 | H (m) | 17 | 16.5 | 16 | 15 | 14.5 | 13 | 11.5 | 8.5 |
| CHLF(T)12-20 | 2.2 | 3 | | 34 | 33 | 32 | 31 | 30 | 27 | 24.5 | 19 |
| CHLF(T)12-30 | 3 | 4 | | 52.5 | 50 | 48.5 | 47 | 45 | 41.5 | 37.5 | 29 |
| CHLF(T)12-40 | 4 | 5.5 | | 69 | 67.5 | 65 | 63 | 60.5 | 56 | 50 | 40 |
| CHLF(T)12-50 | 5.5 | 7.5 | | 88 | 85 | 82 | 80 | 76 | 70.5 | 63 | 50.5 |

● Installation sketch

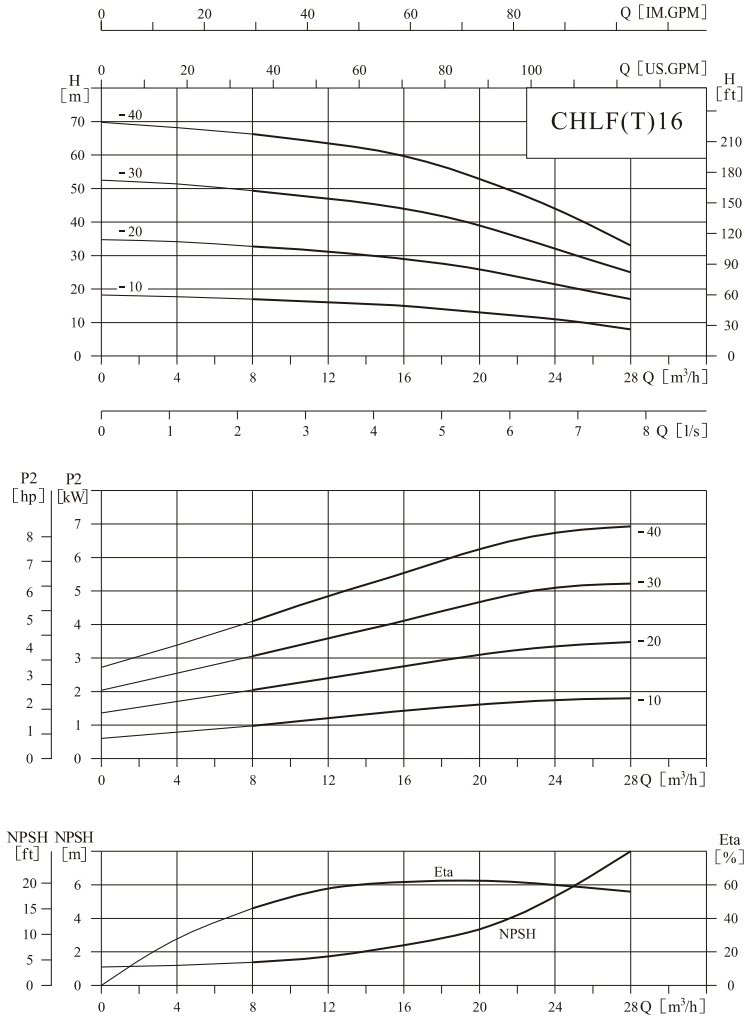


● Size and weight

| Motor | Model | Size (mm) | | | | | | | | | | | Weight (kg) | | |
|------------------------------|--------------|-----------|-----|-----|---------|-----|-----|-----|-----|-----|-----|-----|-------------|------|----|
| | | L1 | L2 | L3 | H | D | E | N | A | M | B | J | | d | K |
| Three-phase/ single-phase | CHLF(T)12-10 | 395 | 126 | 108 | 230/265 | 170 | 227 | 117 | 130 | 108 | 160 | 138 | 9 | /100 | 22 |
| | CHLF(T)12-20 | 430 | 126 | 108 | 240/270 | 180 | 228 | 118 | 130 | 108 | 160 | 138 | 9 | /100 | 25 |
| | CHLF(T)12-30 | 510 | 156 | 138 | 270/ | 195 | 240 | 130 | 130 | 108 | 160 | 138 | 9 | | 32 |
| | CHLF(T)12-40 | 565 | 285 | 168 | 270/ | 220 | 230 | 120 | 230 | 190 | 170 | 140 | 12 | | 44 |
| | CHLF(T)12-50 | 620 | 325 | 198 | 305/ | 255 | 242 | 132 | 260 | 216 | 190 | 140 | 12 | | 58 |

● Performance curve

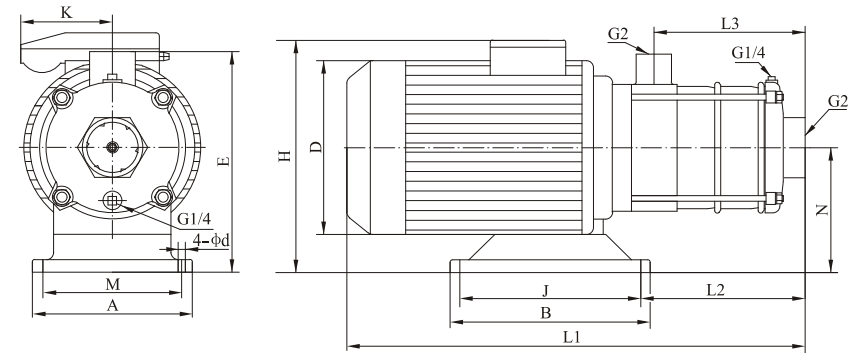
ISO9906 Annex A



● Performance table

| Model | Driving motor | | Q (m³/h) | 8 | 12 | 16 | 20 | 24 | 28 |
|--------------|---------------|------|----------|----|----|----|------|----|----|
| | (kW) | (hp) | | | | | | | |
| CHLF(T)16-10 | 2.2 | 3 | H (m) | 17 | 16 | 15 | 13 | 11 | 8 |
| CHLF(T)16-20 | 4 | 5.5 | | 33 | 31 | 29 | 26 | 21 | 17 |
| CHLF(T)16-30 | 5.5 | 7.5 | | 49 | 47 | 44 | 39 | 32 | 25 |
| CHLF(T)16-40 | 7.5 | 10 | | 66 | 63 | 59 | 52.5 | 43 | 33 |

● Installation sketch

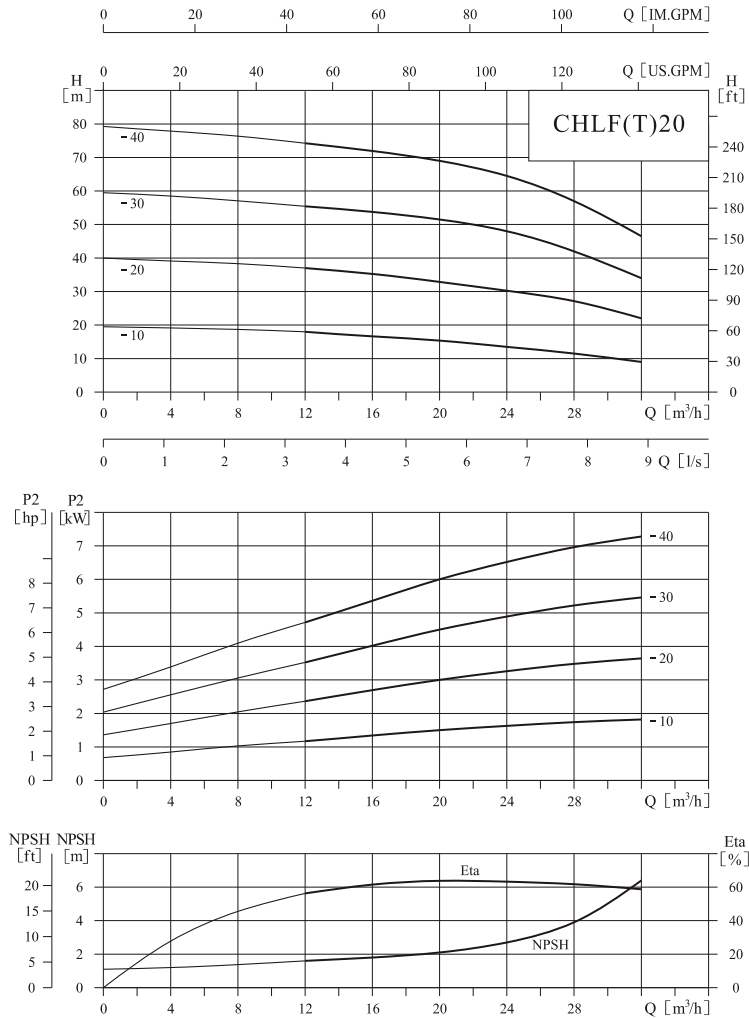


● Size and weight

| Motor | Model | Size (mm) | | | | | | | | | | | Weight (kg) | | |
|------------------------------|--------------|-----------|-----|-----|---------|-----|-----|-----|-----|-----|-----|-----|-------------|------|----|
| | | L1 | L2 | L3 | H | D | E | N | A | M | B | J | | d | K |
| Three-phase/ single-phase | CHLF(T)16-10 | 455 | 151 | 126 | 240/270 | 180 | 228 | 118 | 131 | 108 | 161 | 138 | 9 | /100 | 26 |
| | CHLF(T)16-20 | 531 | 249 | 126 | 270/ | 220 | 230 | 120 | 230 | 190 | 170 | 140 | 12 | | 43 |
| | CHLF(T)16-30 | 600 | 310 | 171 | 305/ | 255 | 242 | 132 | 260 | 216 | 190 | 140 | 12 | | 56 |
| | CHLF(T)16-40 | 645 | 355 | 216 | 305/ | 255 | 242 | 132 | 260 | 216 | 190 | 140 | 12 | | 63 |

● Performance curve

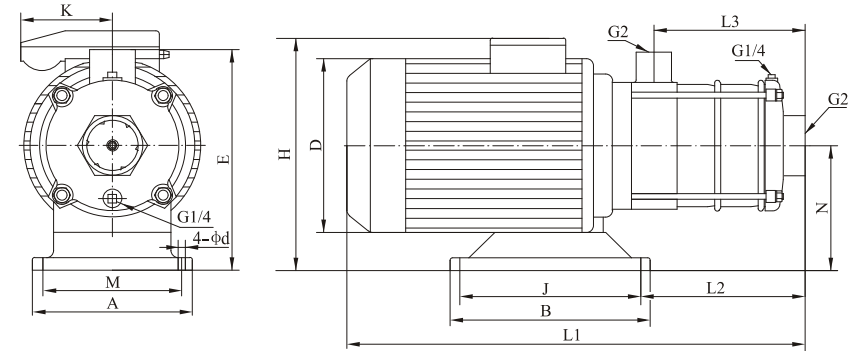
ISO9906 Annex A



● Performance table

| Model | Driving motor | | Q (m³/h) | H (m) | | | | | | | | | | | |
|--------------|---------------|------|----------|-------|------|------|------|------|------|------|------|------|------|----|--|
| | (kW) | (hp) | | 12 | 14 | 16 | 18 | 20 | 22 | 24 | 26 | 28 | 30 | 32 | |
| CHLF(T)20-10 | 2.2 | 3 | H (m) | 18 | 17 | 16.5 | 16 | 15.5 | 14.5 | 13.5 | 12.5 | 11.5 | 10 | 9 | |
| CHLF(T)20-20 | 4 | 5.5 | | 37 | 36 | 35 | 34 | 32.5 | 31.5 | 30 | 29 | 27.5 | 24.5 | 22 | |
| CHLF(T)20-30 | 5.5 | 7.5 | | 55 | 54.5 | 54 | 53 | 51.5 | 50.5 | 48 | 45.5 | 42 | 38.5 | 34 | |
| CHLF(T)20-40 | 7.5 | 10 | | 74 | 73 | 71.5 | 70.5 | 69 | 67 | 64.5 | 61.5 | 57 | 51.5 | 46 | |

● Installation sketch



● Size and weight

| Motor | Model | Size (mm) | | | | | | | | | | | | Weight (kg) | |
|------------------------------|--------------|-----------|-----|-----|---------|-----|-----|-----|-----|-----|-----|-----|----|-------------|----|
| | | L1 | L2 | L3 | H | D | E | N | A | M | B | J | d | | K |
| Three-phase/ single-phase | CHLF(T)20-10 | 455 | 151 | 126 | 240/270 | 180 | 228 | 118 | 130 | 108 | 160 | 138 | 9 | /100 | 26 |
| | CHLF(T)20-20 | 531 | 249 | 126 | 270/ | 220 | 230 | 120 | 230 | 190 | 170 | 140 | 12 | | 43 |
| | CHLF(T)20-30 | 600 | 310 | 171 | 305/ | 255 | 242 | 132 | 260 | 216 | 190 | 140 | 12 | | 56 |
| | CHLF(T)20-40 | 645 | 355 | 216 | 305/ | 255 | 242 | 132 | 260 | 216 | 190 | 140 | 12 | | 63 |

CNP India
NANFANG PUMPS INDIA PVT. LTD.
Address: 103,Kasturi Tower, 238/A, L.B.S Marg, Opp.Red Cross Bhavan,
Thane-400 602, India.
Tel : +91-22-2542 5540
Fax: +91-22-2542 7306
E-mail: sales@nanfangpumps.com
Website: <http://www.nanfangpumps.com>

CNP Indonesia
PT SOUTHERN INDONESIA (Lindeteves Trade Centre)
Address:Blk RA No 56-57,Jl Hayam Wuruk 127,Jakarta 11180,Indonesia
Tel: +62 21 62200955 / 30012832
Fax: +62 21 62201026 / 30064055
E-mail: info@southernindonesia.com
Website: <http://www.southernindonesia.com>

Malaysia sole agent
IKHUA ENGINEERING SDN.BHD.
Address: Plot F, Lot 1998, Jalan Perusahaan Tiga, Taman Selesa Jaya,
43300 Balakong, Selangor Darul Ehsan, Malaysia.
Tel: 603-8961 6858 (Hunting Line)
Fax: 603-8961 3118
E-mail: ikhuaengrg@pd.jaring.my
Website: <http://www.ikhua.com.my>